



**Gianni  
Ferrari**

---

# ***Turboloader***

---

**M220**

**M280**

**M360**

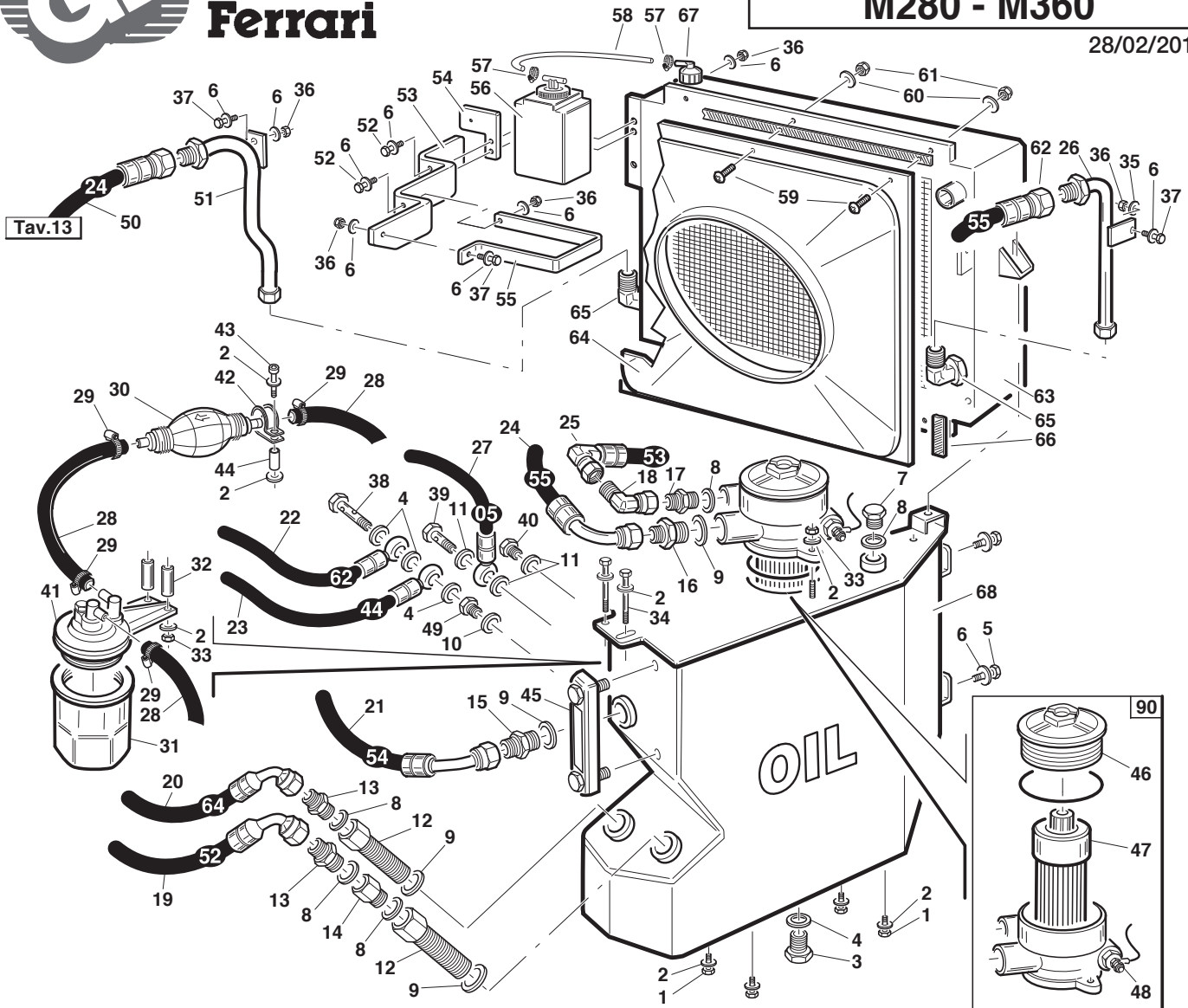


---

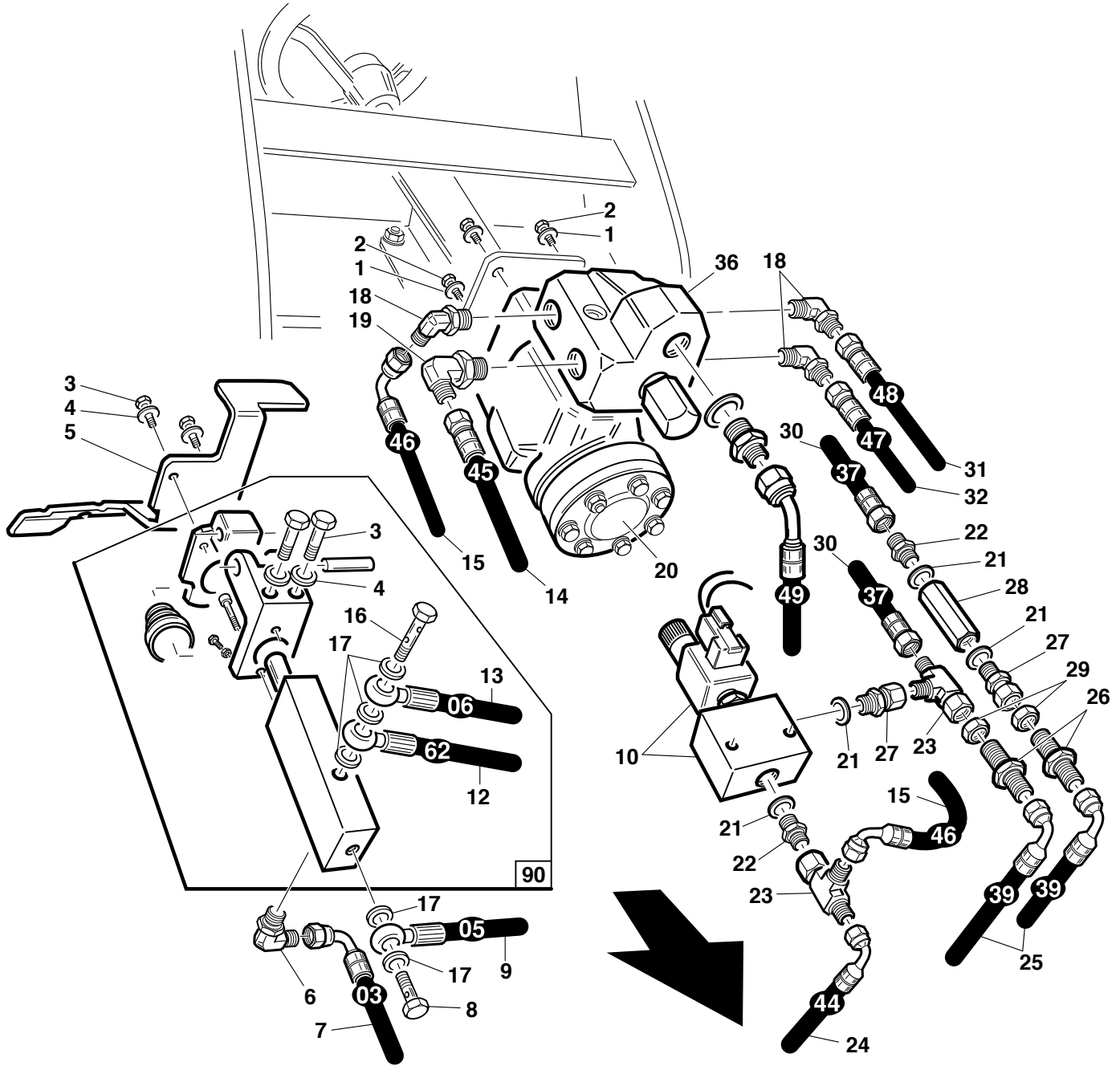
**CATALOGO PARTI DI RICAMBIO  
CATALOGUE PIECES DETACHEES  
ERSATZTEILKATALOG  
PARTS MANUAL**

---

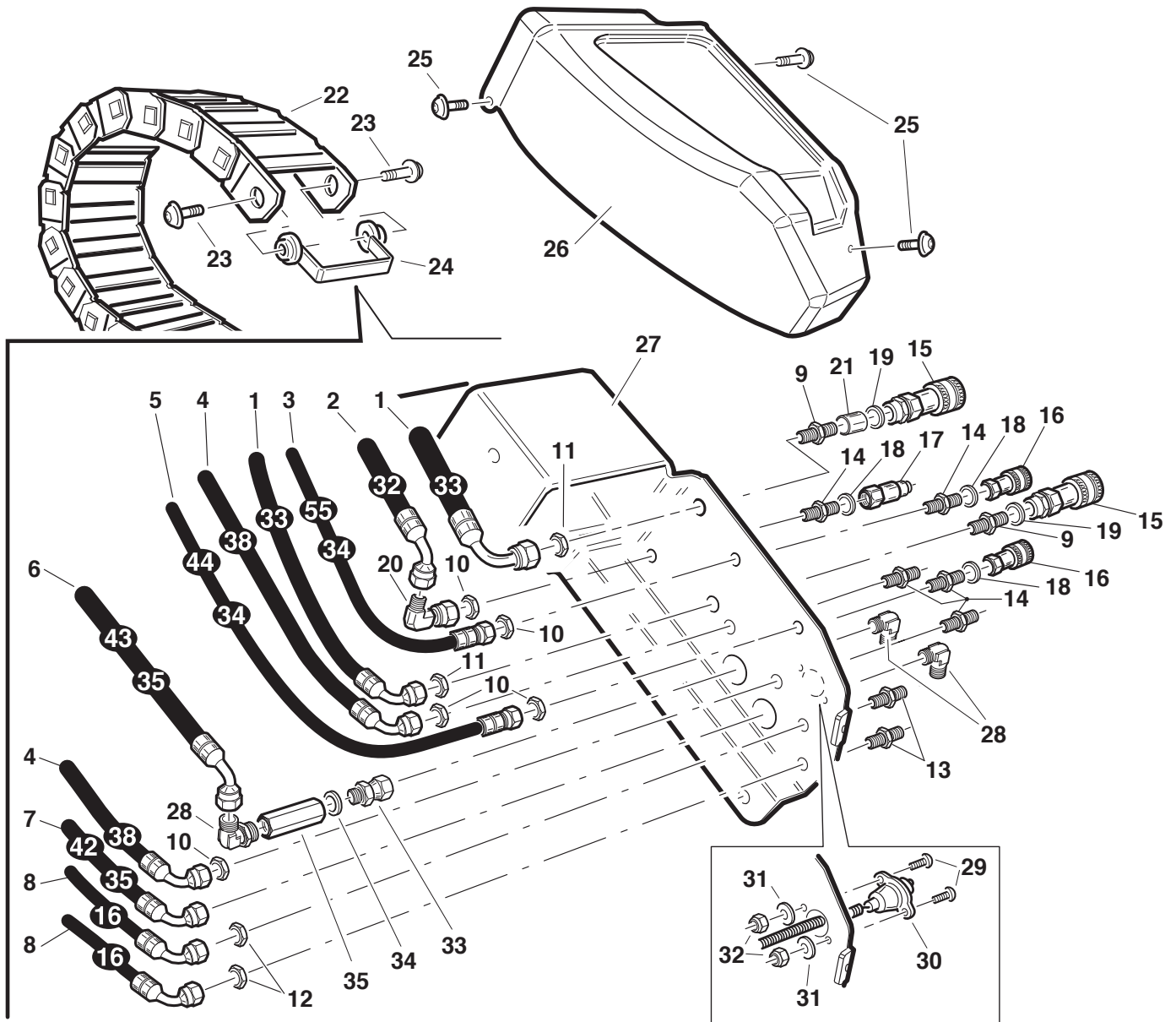
10.03.2011



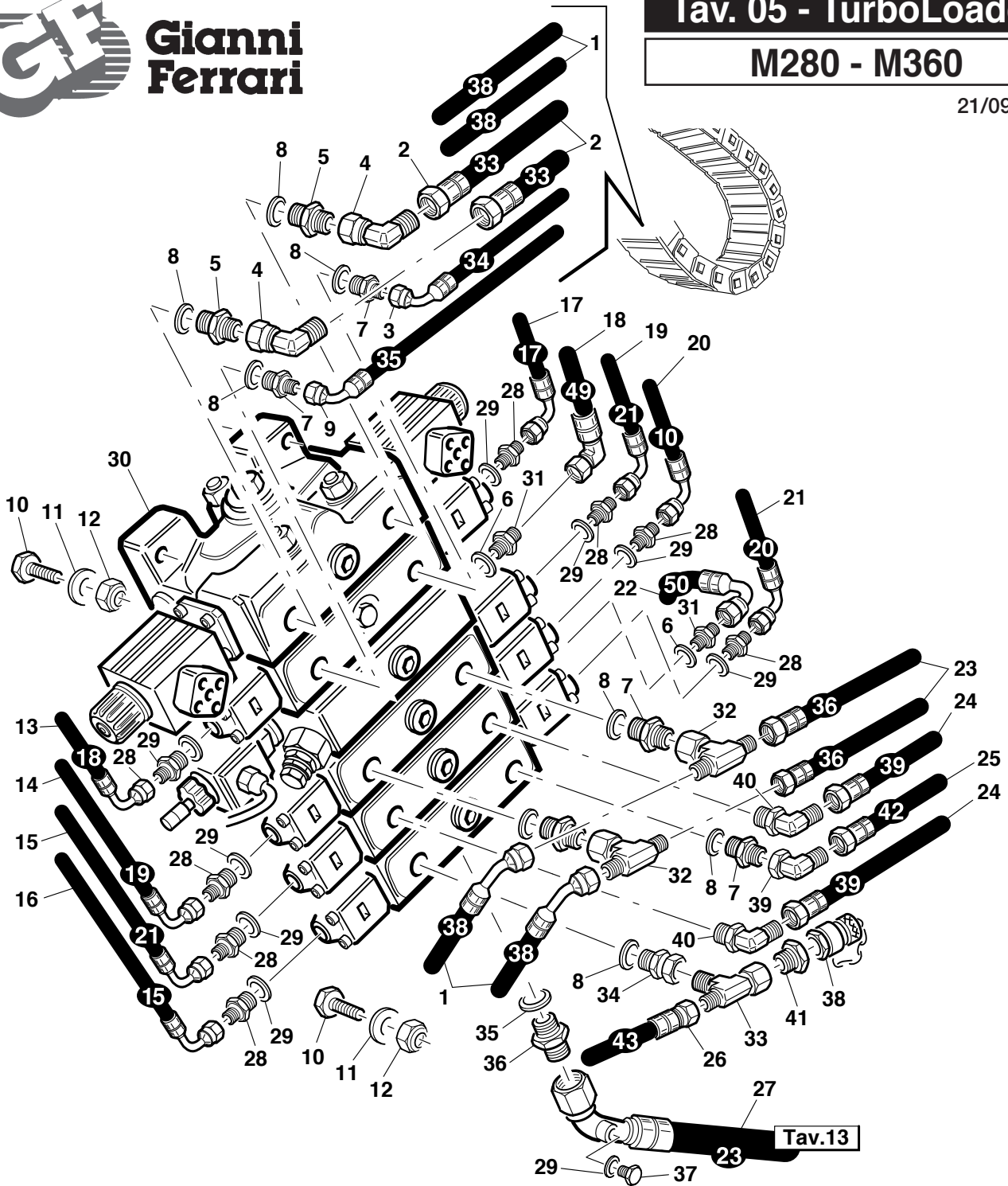
Ref.	Leg.	Code	Q.ty	Ref.	Leg.	Code	Q.ty	Ref.	Leg.	Code	Q.ty
1		00.92.05.1070	4	25		00.41.20.0062	1	47		00.32.20.0012	1
2		00.68.01.0030	12	26		00.41.20.0084	1	48		00.32.20.0013	1
3		00.85.02.0003	1	27		00.41.20.0014	1	49		00.41.00.0914	1
4		00.41.00.0070	4	28		00.89.02.0000	mm800	50		00.41.20.0082	1
5		00.92.03.1040	2	28		00.89.02.0000	mm470	51		00.41.20.0083	1
6		00.68.01.0020	10	28		00.89.02.0000	mm320	52		00.92.03.1090	2
7		00.85.02.0005	1	29		00.29.02.0016	4	53		01.60.20.0418	1
8		00.41.00.0073	3	30		00.99.00.0320	1	54		01.60.20.0451	1
9		00.41.00.0074	4	31		00.32.03.0040	1	55		01.60.20.0417	1
10		00.41.00.0071	1	32		01.40.00.2790	2	56		00.75.00.0042	1
11		00.41.00.0060	3	33		00.26.05.0060	3	57		00.29.10.0030	2
12		00.32.03.0070	2	34		00.92.05.1170	2	58		00.89.10.3000	1
13		00.41.00.0115	1	35		00.68.02.0030	2	59		00.91.04.0080	3
14		00.41.00.0878	1	36		00.26.04.0040	5	60		00.68.03.0010	3
15		00.41.00.0826	1	37		00.92.03.1070	3	61		00.26.04.0020	3
16		00.41.00.0116	1	38		00.41.00.0253	1	62		00.41.20.0064	1
17		00.41.00.0794	1	39		00.41.00.0120	1	63		00.54.10.0090	1
18		00.41.00.0868	1	40		00.85.02.0002	1	64		01.30.20.0024	1
19		00.41.20.0061	2	41		00.55.01.0390	1	65		00.41.00.0876	2
20		00.41.20.0073	1	42		00.29.01.0075	1	66	mt	00.07.05.0022	1,5
21		00.41.20.0063	1	43		00.90.06.0060	1	67		00.54.10.0027	1
22		00.41.20.0078	1	44		00.40.00.0500	1	68		01.50.20.0028	1
23		00.41.20.0053	1	45		00.75.00.0140	1	90		00.32.20.0010	1
24		00.41.20.0064	1	46		00.32.20.0011	1				



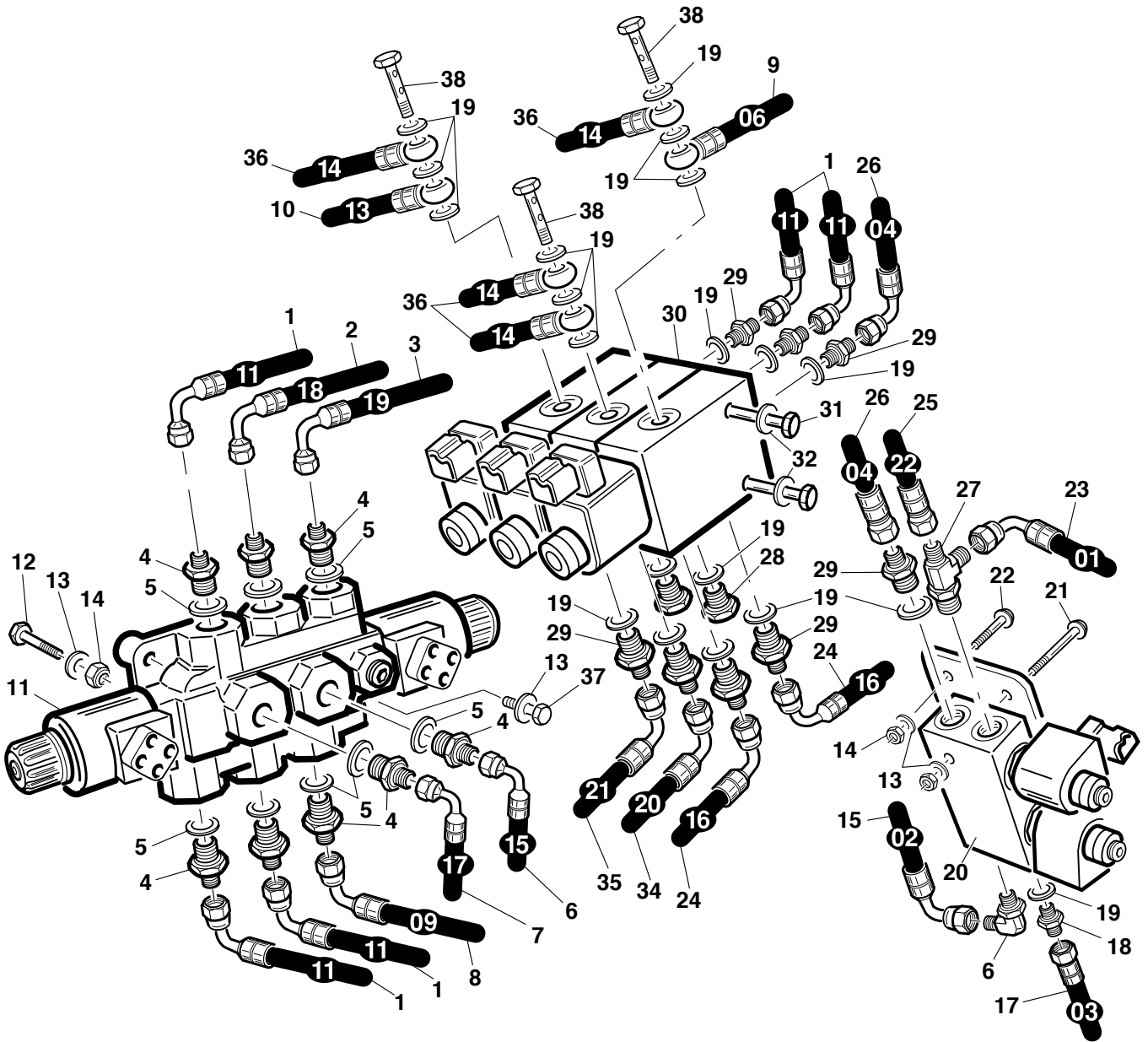
Ref.	Leg.	Code	Q.ty	Ref.	Leg.	Code	Q.ty	Ref.	Leg.	Code	Q.ty
1		00.68.12.0010	4	14		00.41.20.0054	1	26		00.41.00.0361	2
2		00.92.06.1060	4	15		00.41.20.0055	1	27		00.41.00.2822	2
3		00.92.03.1070	4	16		00.41.00.0124	1	28		00.41.00.0296	1
4		00.68.01.0020	4	17		00.41.00.0060	5	29		00.41.00.0371	2
5		01.60.20.0281	1	18		00.41.00.0875	3	30		00.41.20.0046	2
6		00.41.00.0874	1	19		00.41.00.0876	1	31		00.41.20.0057	1
7		00.41.20.0012	1	20		00.41.00.3560	1	32		00.41.20.0056	1
8		00.41.00.0120	1	21		00.41.00.0070	4	33		00.41.20.0058	1
9		00.41.20.0014	1	22		00.41.00.0110	2	34		00.41.00.0113	1
10		00.41.00.3580	1	23		00.41.00.0881	2	35		00.41.00.0071	1
12		00.41.20.0078	1	24		00.41.20.0053	1	36		00.41.00.3570	1
13		00.41.20.0015	1	25		00.41.20.0048	2				



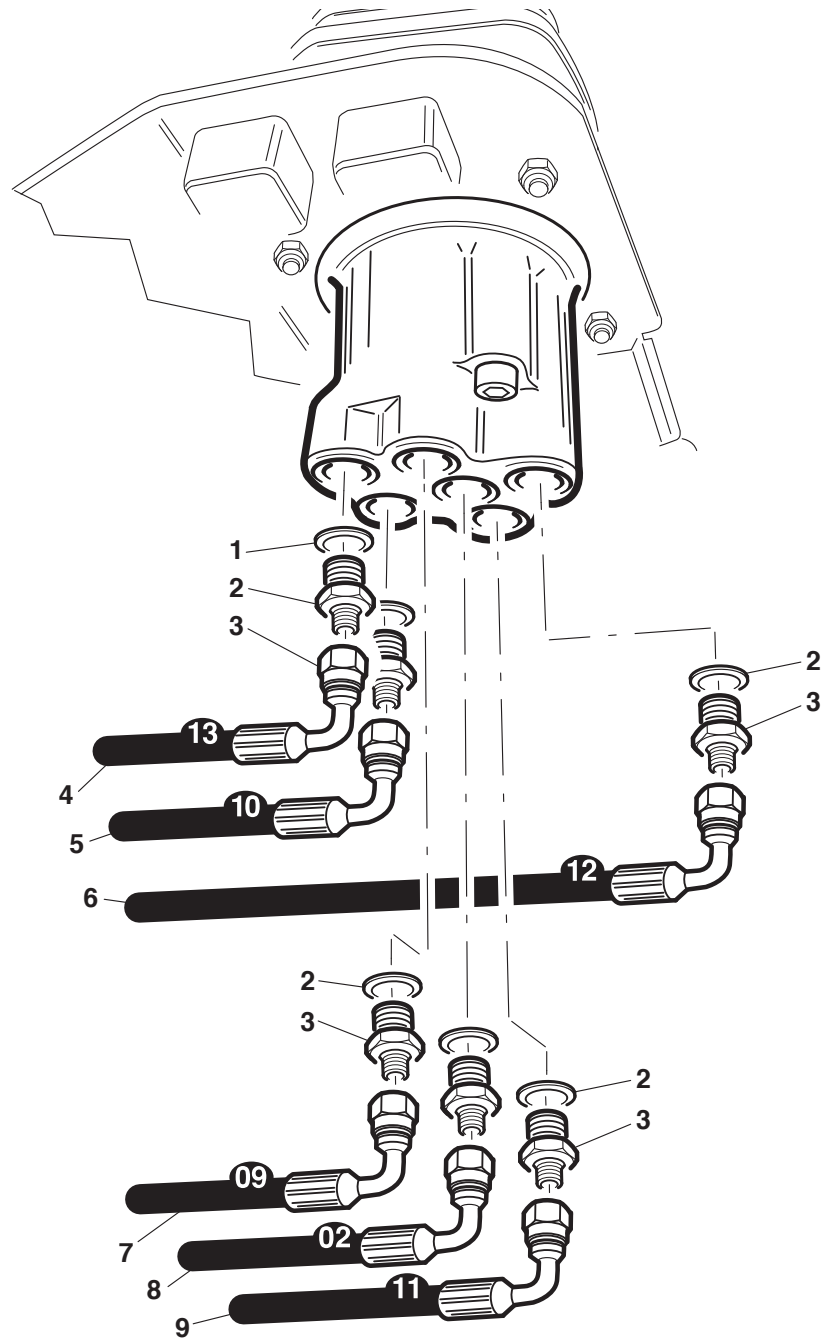
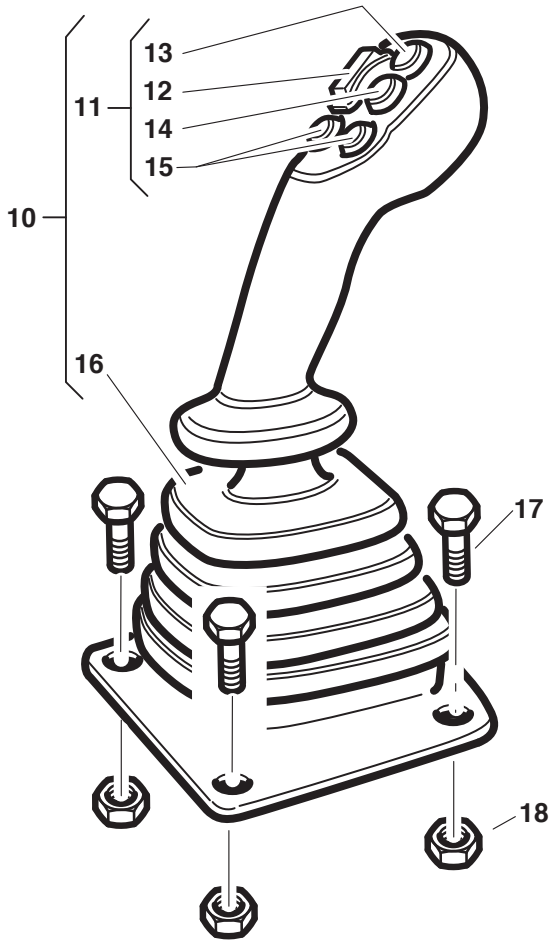
Ref.	Leg.	Code	Q.ty	Ref.	Leg.	Code	Q.ty	Ref.	Leg.	Code	Q.ty
1		00.41.20.0042	2	10		00.41.00.0371	4	23		00.90.06.3080	2
2		00.41.20.0041	1	11		00.41.00.0373	2	24		01.50.20.0027	1
3	55	00.41.20.0064	1	12		00.41.00.0370	2	25		01.90.04.3070	3
3	34	01.41.20.0043	1	13		00.41.00.0360	2	26		01.30.20.0012	1
4		00.41.20.0047	2	14		00.41.00.0361	5	27		01.50.20.0066	1
5	44	00.41.20.0043	1	15		00.41.00.0465	2	28		00.41.00.0875	3
5	34	01.41.20.0043	1	16		00.41.00.3762	2	29		00.91.04.0050	2
6	43	00.41.20.0052	1	17		00.41.00.3772	1	30		00.40.00.3000	1
6	35	01.41.20.0044	1	18		00.41.00.0070	4	31		00.68.01.0009	2
7	42	00.41.20.0051	1	19		00.41.00.1293	2	32		00.26.04.0020	2
7	35	01.41.20.0044	1	20		00.41.00.0871	2	33		00.41.00.2822	1
8		00.41.20.0025	2	21		01.40.20.0025	1	34		00.41.00.1290	1
9		00.41.00.0363	2	22		00.15.03.0001	1	35		00.41.00.0296	1



Ref.	Leg.	Code	Q.ty	Ref.	Leg.	Code	Q.ty	Ref.	Leg.	Code	Q.ty
1		00.41.20.0047	2	15		00.41.20.0030	1	29		00.41.00.0060	9
2		00.41.20.0042	2	16		00.41.20.0025	1	30		00.41.00.3630	1
3		00.41.20.0043	1	17		00.41.20.0026	1	31		00.41.00.0113	2
4		00.41.00.0872	2	18		00.41.20.0058	1	32		00.41.00.0731	2
5		00.41.00.0784	2	19		00.41.20.0030	1	33		00.41.00.0881	1
6		00.41.00.0071	2	20		00.41.20.0019	1	34		00.41.00.2821	1
7		00.41.00.0110	5	21		00.41.20.0029	1	35		00.41.00.0073	1
8		00.41.00.0070	8	22		00.41.20.0059	1	36		00.41.00.0794	1
9		00.41.20.0044	1	23		00.41.20.0045	2	37		00.85.02.0002	1
10		00.90.06.3130	4	24		00.41.20.0048	2	38		00.41.00.3085	1
11		00.68.01.0030	4	25		00.41.20.0051	1	39		00.41.00.0871	1
12		00.26.05.0060	4	26		00.41.20.0052	1	40		00.41.00.0875	2
13		00.41.20.0027	1	27		00.41.20.0081	1				
14		00.41.20.0028	1	28		00.41.00.0780	8				

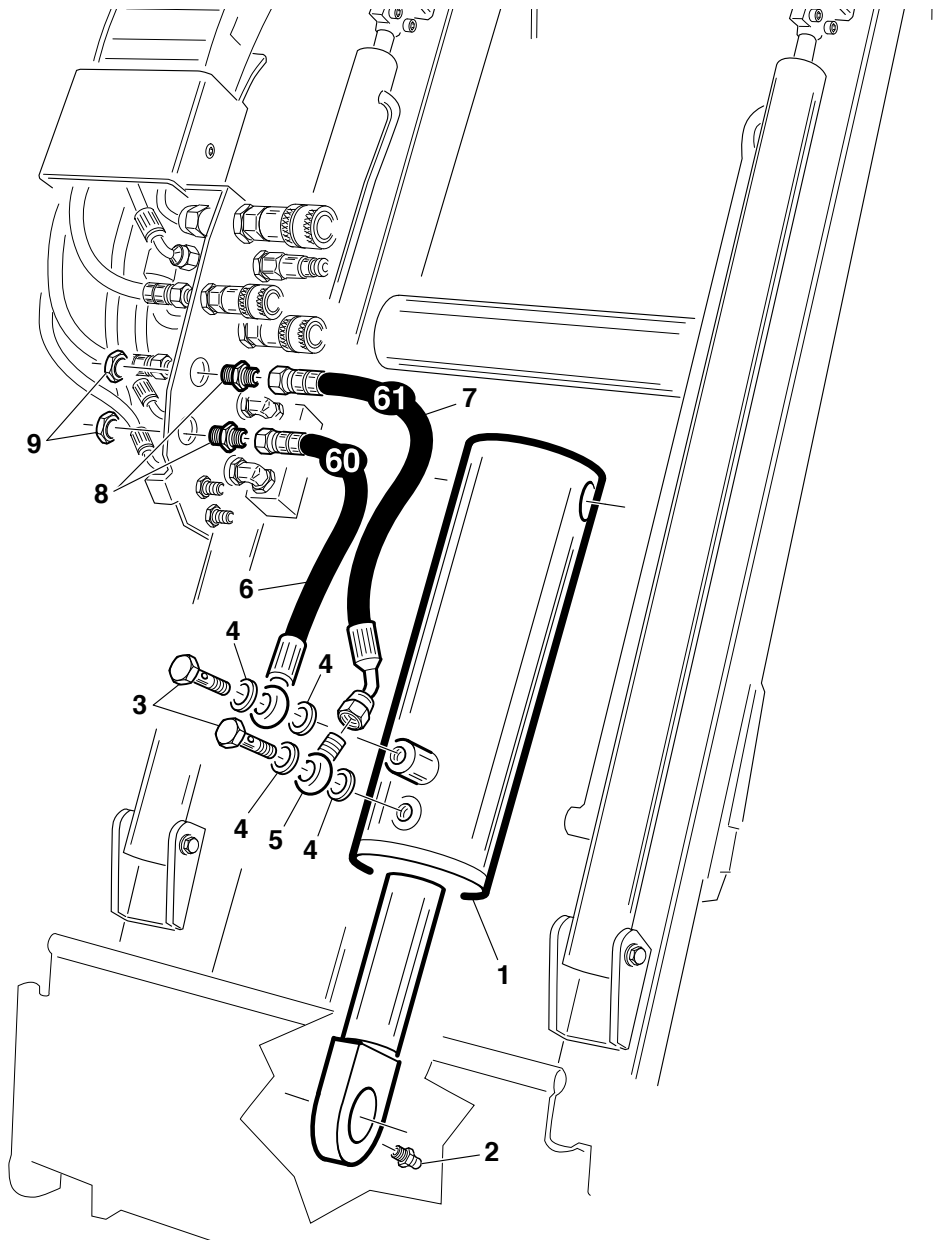


Ref.	Leg.	Code	Q.ty	Ref.	Leg.	Code	Q.ty	Ref.	Leg.	Code	Q.ty
1		00.41.20.0020	3	14		00.26.05.0060	3	27		00.41.00.2101	1
2		00.41.20.0027	1	15		00.41.20.0011	1	28		00.85.02.0002	2
3		00.41.20.0028	1	16		00.41.00.0874	1	29		00.41.00.0780	8
4		00.41.00.0781	8	17		00.41.20.0012	1	30		00.41.00.3420	3
5		00.41.00.0070	8	18		00.41.00.0450	1	31		00.92.03.0270	2
6		00.41.20.0024	1	19		00.41.00.0060	20	32		00.68.01.0020	2
7		00.41.20.0026	1	20		00.41.00.3660	1	34		00.41.20.0029	1
8		00.41.20.0018	1	21		00.90.06.3150	2	35		00.41.20.0030	1
9		00.41.20.0015	1	22		00.90.06.3100	2	36		00.41.20.0023	2
10		00.41.20.0022	1	23		00.41.20.0010	1	37		00.92.05.1120	1
11		00.41.00.3640	1	24		00.41.20.0025	2	38		00.41.00.0124	3
12		00.90.06.3130	1	25		00.41.20.0032	1	39		00.90.06.3100	2
13		00.68.01.0030	4	26		00.41.20.0013	1				



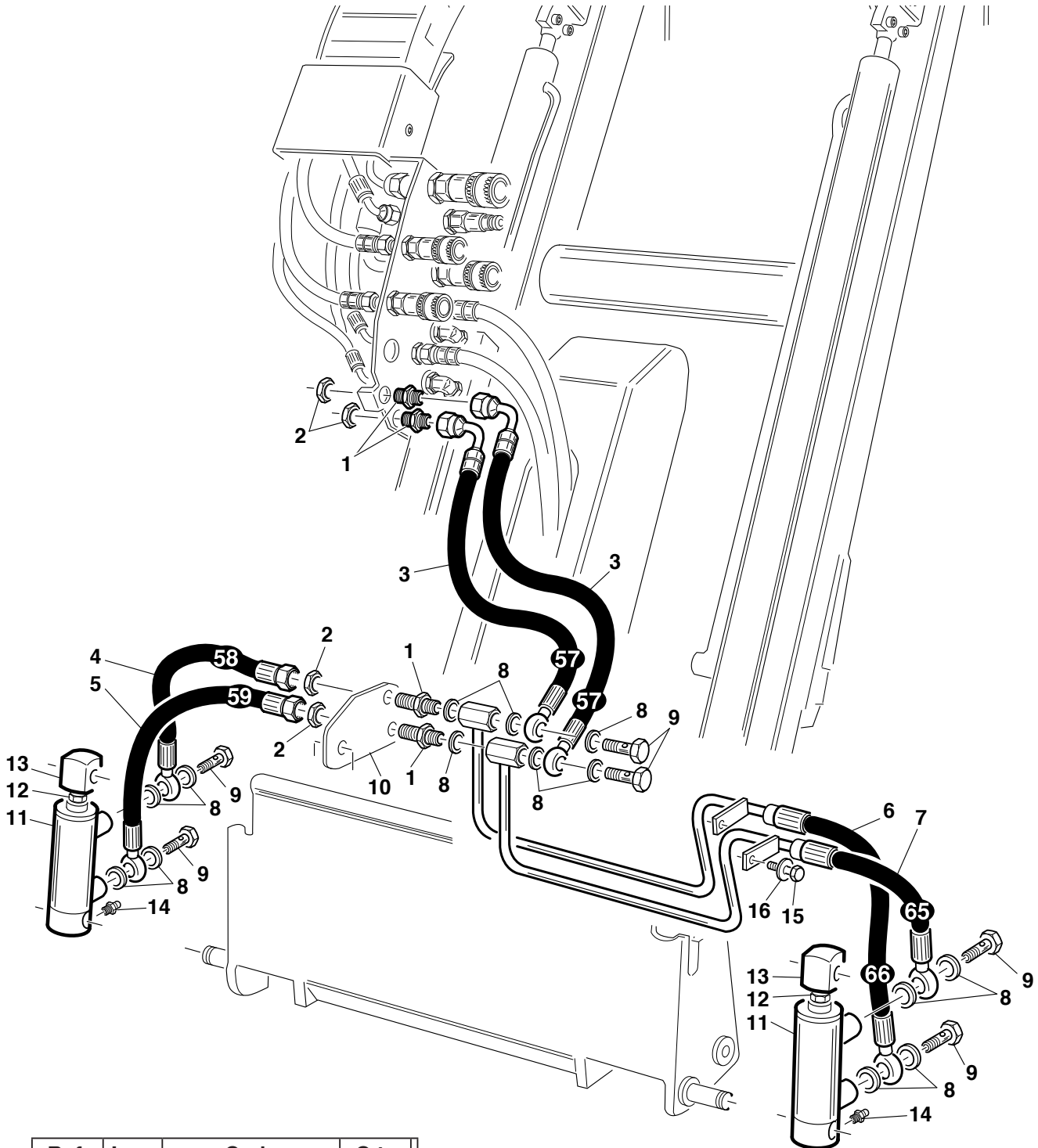
Ref.	Leg.	Code	Q.ty
1		00.41.00.3650	1
2		00.41.00.0060	6
3		00.41.00.0780	6
4		00.41.20.0022	1
5		00.41.20.0019	1
6		00.41.20.0021	1
7		00.41.20.0018	1
8		00.41.20.0011	1
9		00.41.20.0020	1
10		00.41.00.3650	1
10		00.41.00.3651	1

Ref.	Leg.	Code	Q.ty
11		00.40.00.2500	1
11		00.40.00.2501	1
12		00.40.00.2502	1
12		00.40.00.2503	1
13		00.40.00.2504	1
14		00.40.00.2506	1
15		00.40.00.2505	2
16		00.07.01.0124	1
17		00.92.03.1070	4
18		00.26.03.0040	4



Ref.	Leg.	Code	Q.ty
1		00.58.20.0012	1
2		00.42.00.0010	1
3		00.41.00.0250	2
4		00.41.00.0070	4
5		00.41.00.0242	1
6		00.41.20.0069	1
7		00.41.20.0070	1
8		00.41.00.0361	2
9		00.41.00.0371	2





Ref.	Leg.	Code	Q.ty	Ref.	Leg.	Code	Q.ty
1		00.41.00.0360	4				
2		00.41.00.0370	4				
3		00.41.20.0066	2				
4		00.41.20.0067	1	11		00.58.20.0015	2
5		00.41.20.0068	1	12		00.26.03.0090	2
6		00.41.20.0075	1	13		00.40.20.0075	2
7		00.41.20.0074	1	14		00.42.00.0010	2
8		00.41.00.0060	14	15		00.92.05.1080	2
9		00.41.00.0120	6	16		00.68.02.0050	2
10		01.60.20.0026	1				

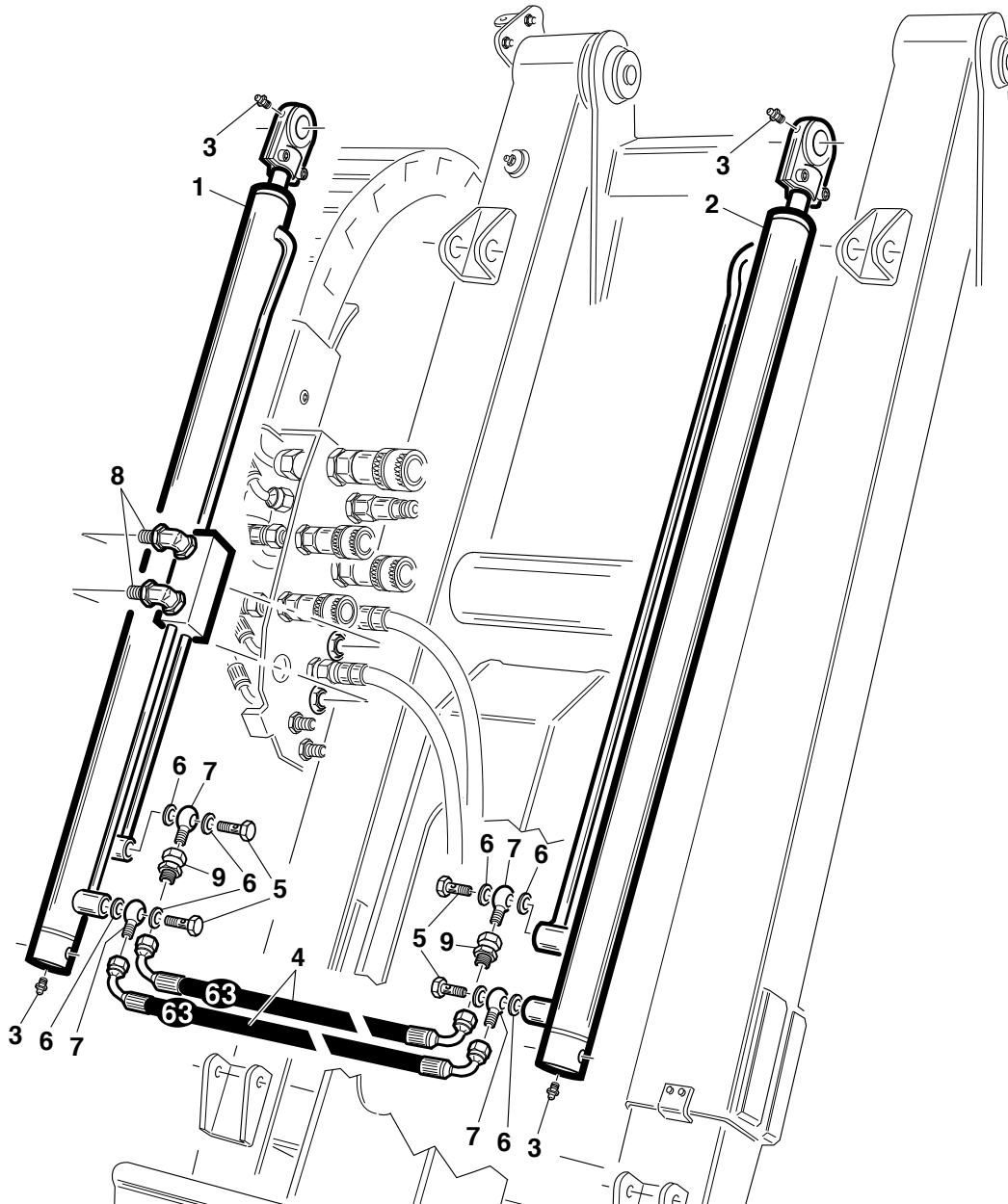


**Gianni  
Ferrari**

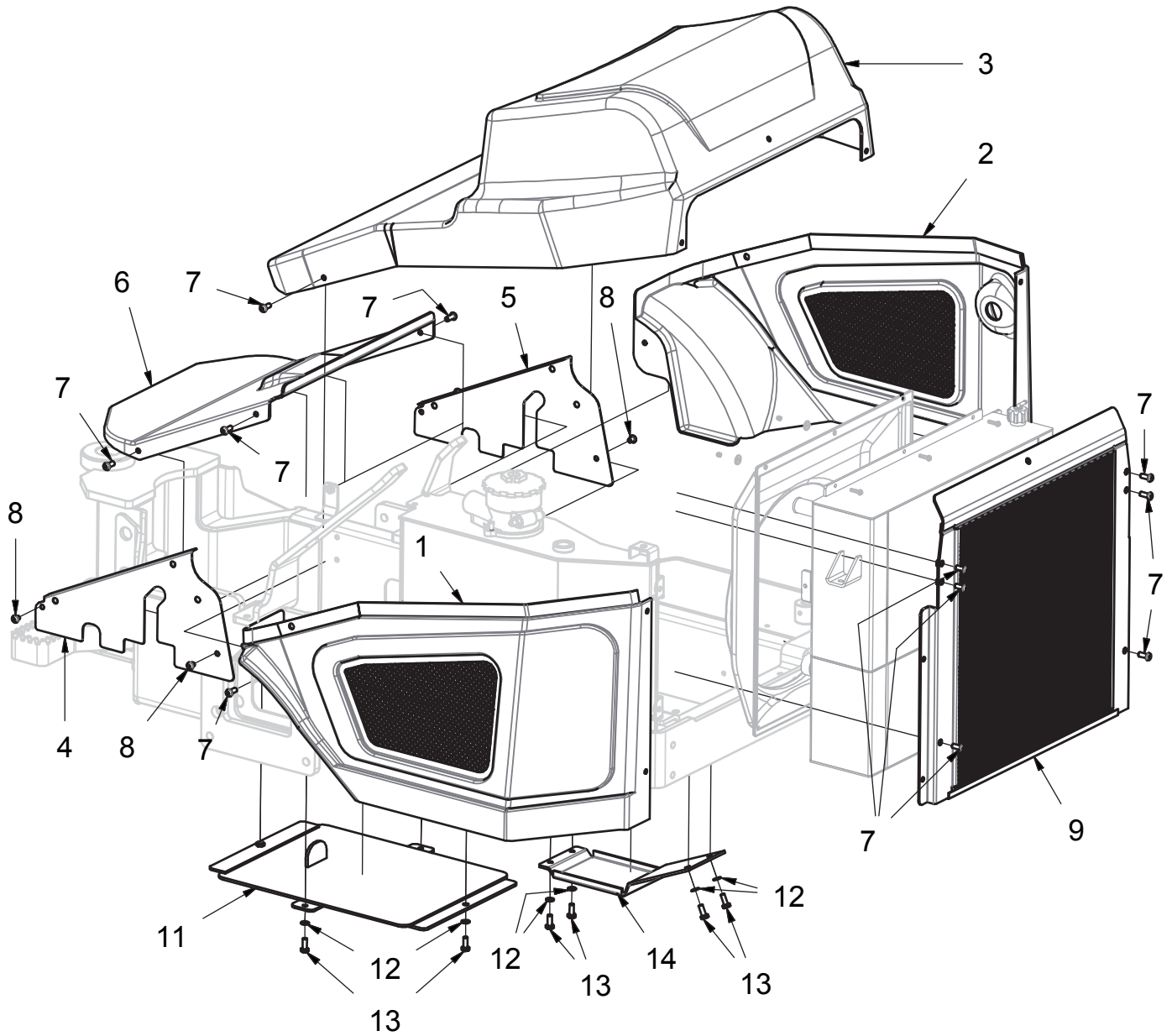
**Tav. 10 - TurboLoader**

**M220 - M280 - M360**

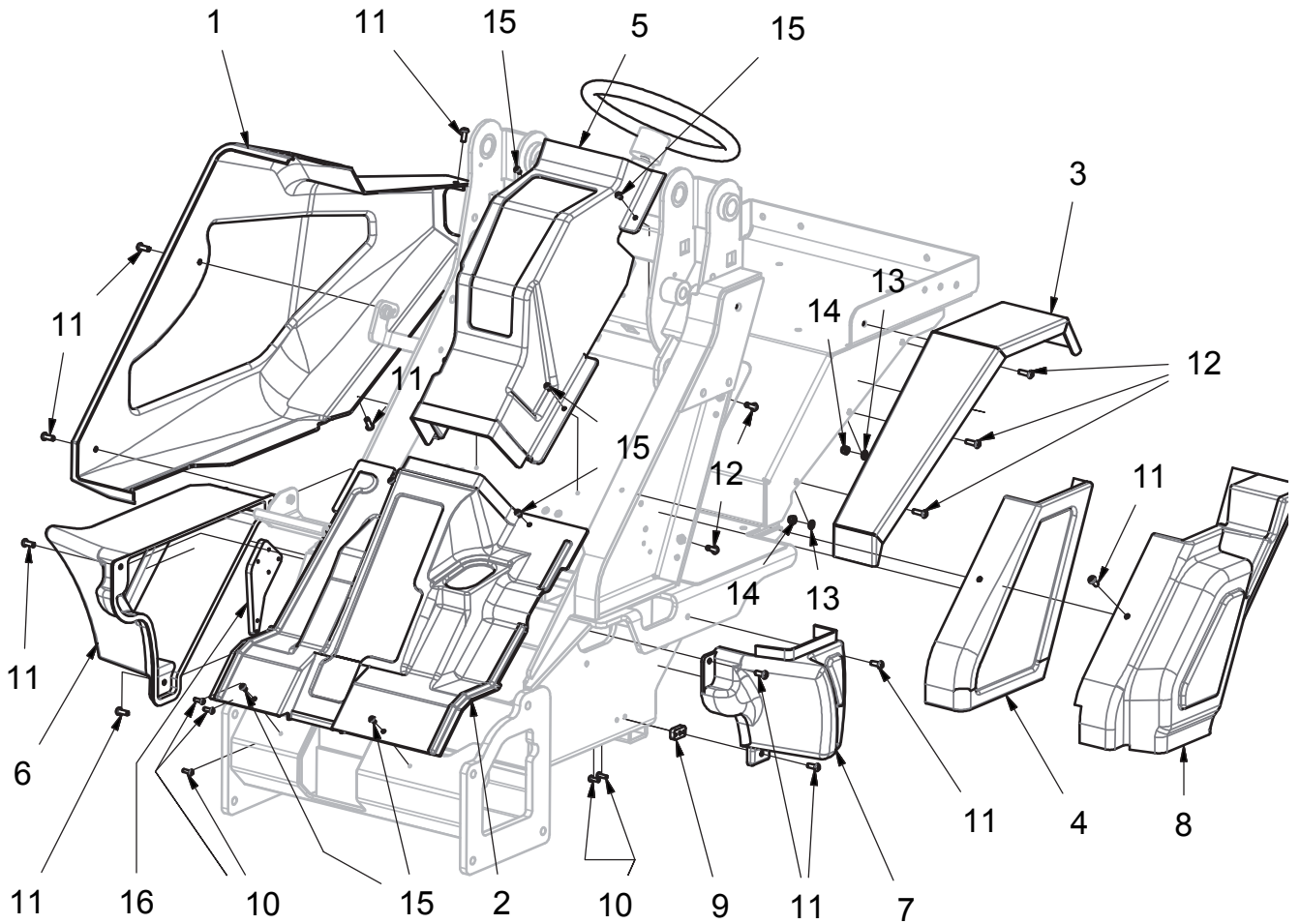
21/09/2009



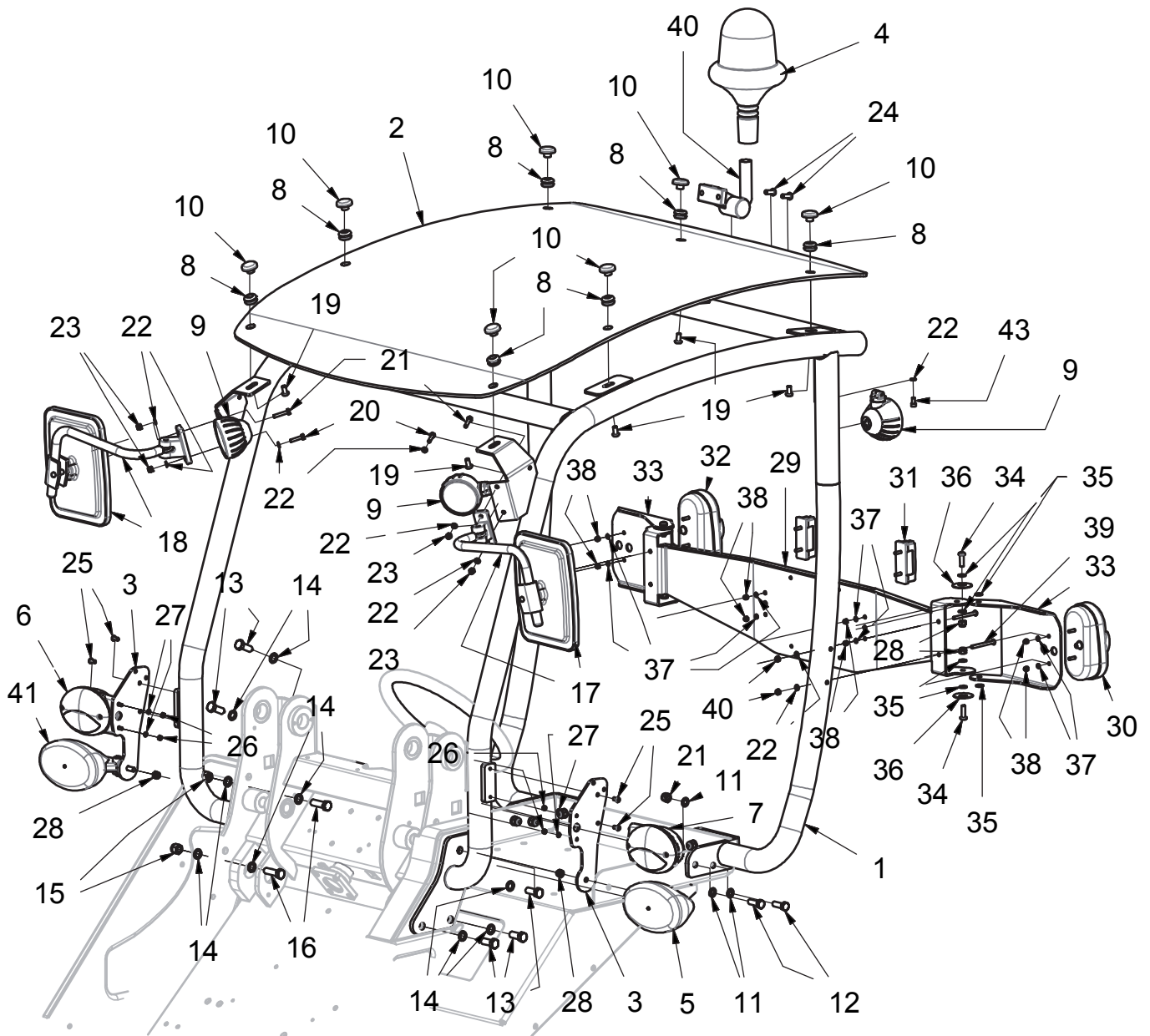
Ref.	Leg.	Code	Q.ty
1	DX	00.58.20.0016	1
2	SX	00.58.20.0010	1
3		00.42.00.0010	4
4		00.41.20.0072	2
5		00.41.20.0120	4
6		00.41.00.0060	8
7		00.41.00.0240	4
8		00.41.00.0875	2
9		00.41.00.2821	2



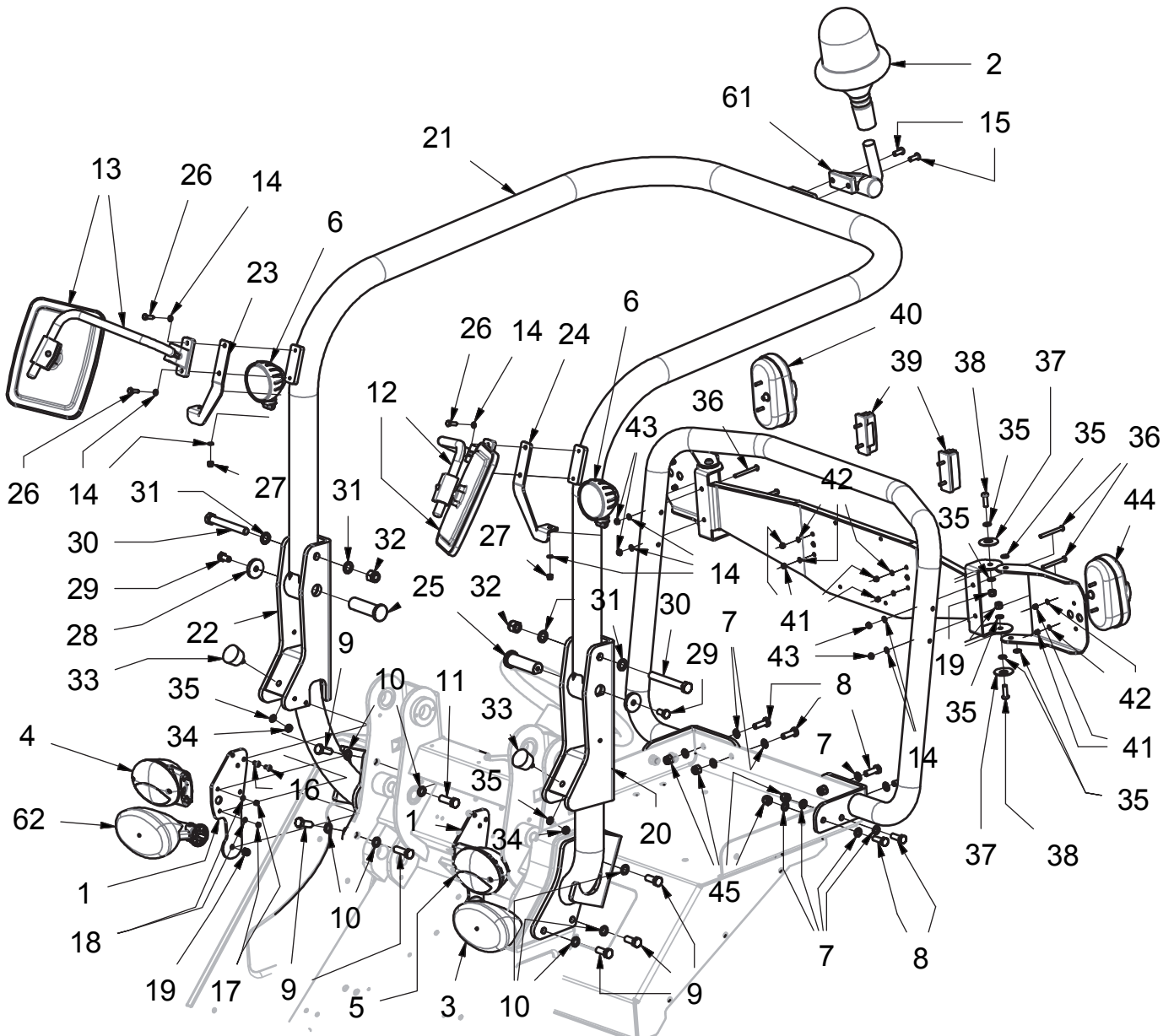
Ref.	Leg.	Code	Q.ty	Ref.	Leg.	Code	Q.ty
1		01.90.20.0060	1	7		00.90.06.3080	14
2		01.90.20.0102	1	8		00.90.04.3090	4
3		01.30.20.0015	1	9		01.50.20.0112	1
4		01.60.20.0153	1	10		01.60.20.0250	1
5		01.60.20.0121	1	11		01.60.20.0247	1
6		01.30.20.0022	1	12		00.68.01.0030	8
				13		00.92.05.1070	8



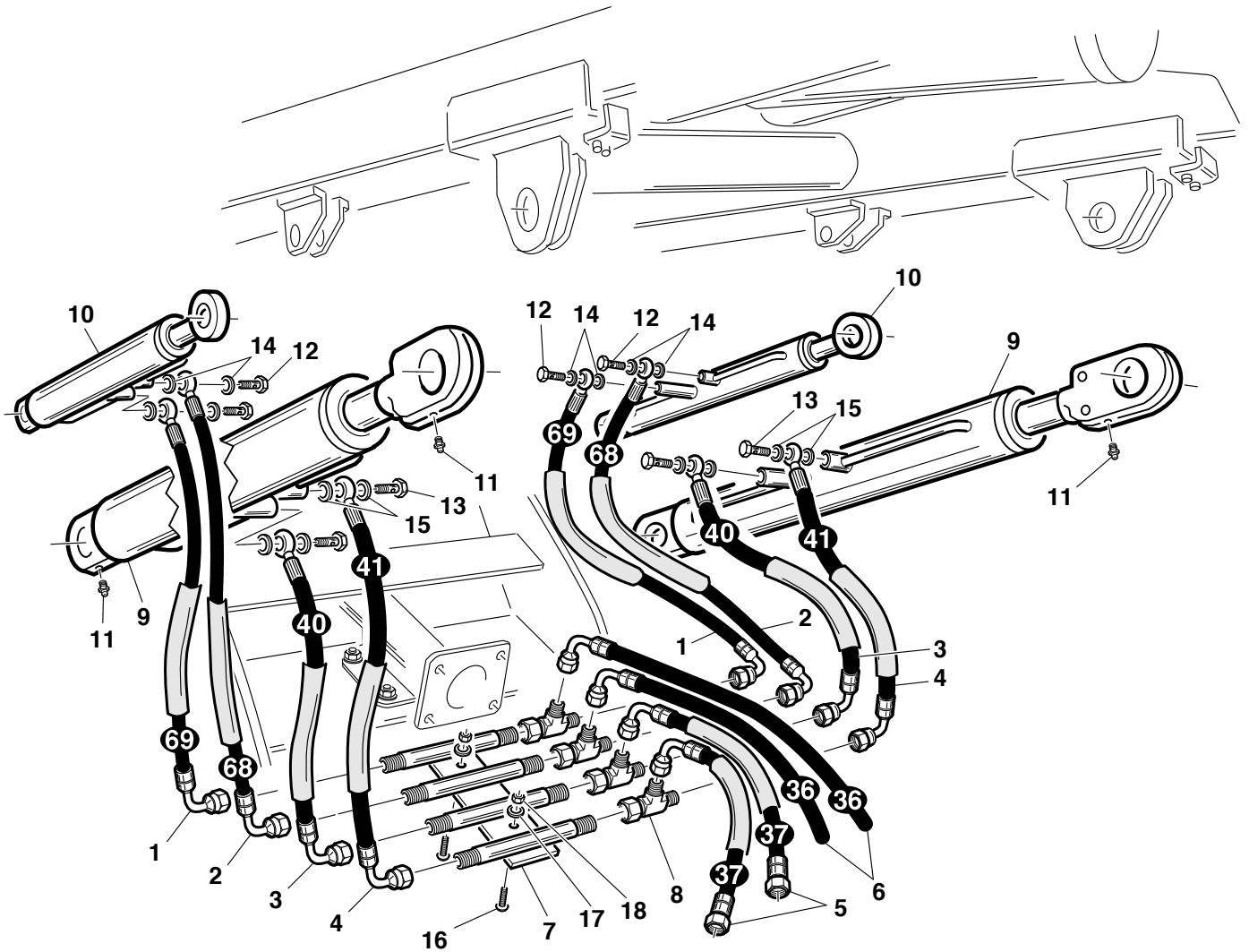
Ref.	Leg.	Code	Q.ty	Ref.	Leg.	Code	Q.ty
1		01.30.20.0014	1	9		01.60.20.0739	1
2		01.30.20.0019	1	10		00.90.04.3070	5
3		01.60.20.0207	1	11		00.90.06.3080	17
4		01.30.20.0023	1	12		00.90.06.3100	6
5		01.30.20.0018	1	13		00.62.01.0030	4
6		01.30.20.0041	1	14		00.26.01.0060	4
7		01.30.20.0047	1	15		00.90.04.3040	8
8		01.30.20.0038	1	16		01.60.20.0511	1



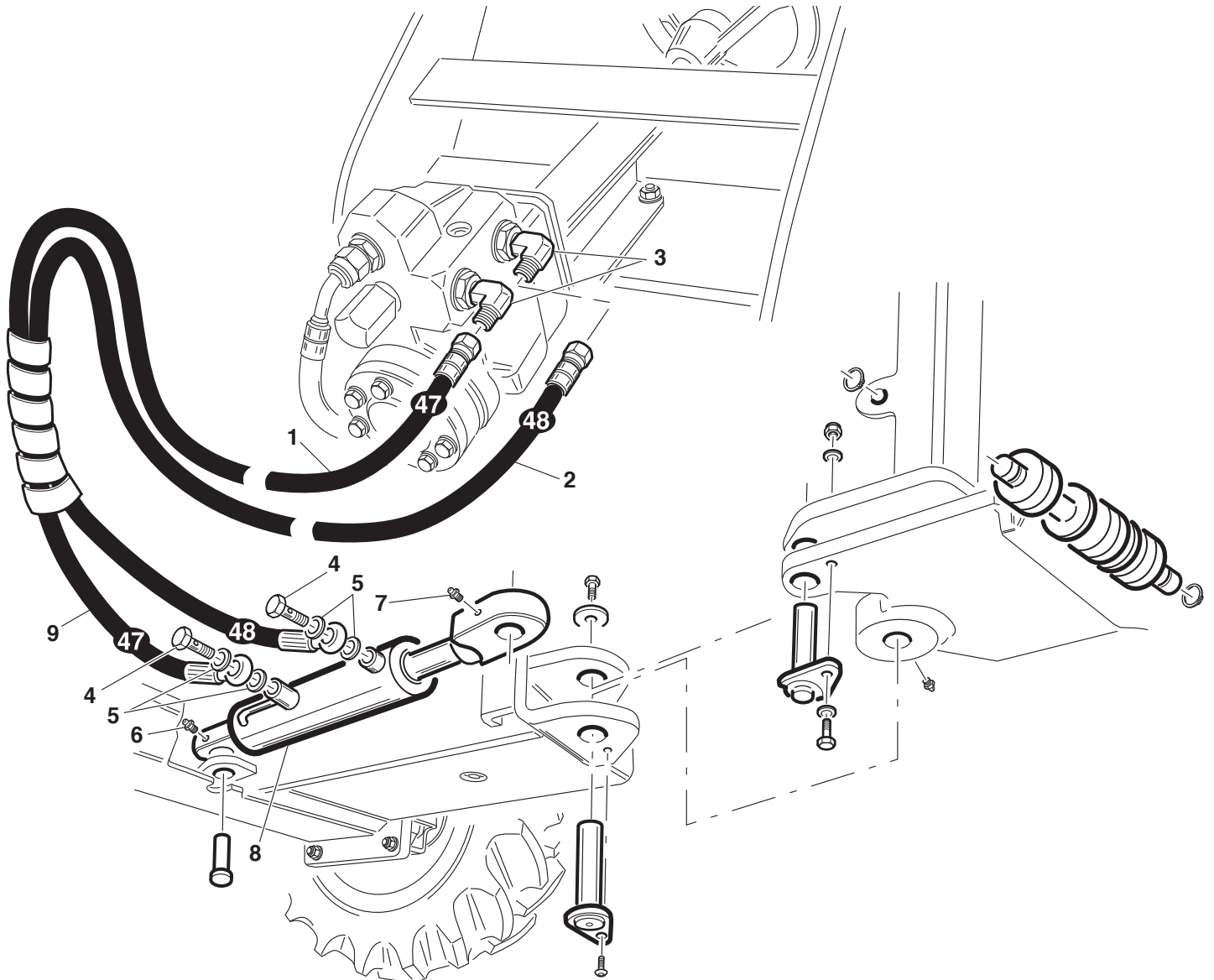
Ref.	Leg.	Code	Q.ty	Ref.	Leg.	Code	Q.ty	Ref.	Leg.	Code	Q.ty
1		01.50.20.0089	1	15		00.26.04.0080	2	29		01.60.20.0356	1
2		00.99.01.0050	1	16		00.92.07.1090	2	30		00.40.00.1220	1
3		01.60.20.0373	2	17		00.99.00.0210	1	31		00.40.00.0550	2
4		00.40.00.0490	1	18		00.99.00.0290	1	32		00.40.00.1210	1
5		00.40.00.1281	2	19		00.90.06.3060	7	33		01.60.20.0124	2
6		00.40.00.1260	1	20		00.92.03.1090	2	34		00.90.06.3100	4
7		00.40.00.1270	1	21		00.92.03.1110	2	35		00.68.01.0030	12
8		00.07.01.0038	7	22		00.68.01.0020	12	36		00.48.00.0183	4
9		00.40.00.1290	4	23		00.26.04.0040	4	37		00.68.01.0010	8
10		00.45.00.0116	7	24		00.90.06.3080	2	38		00.26..04.0030	8
11		00.68.01.0040	16	25		00.90.04.3040	4	39		00.90.04.3130	4
12		00.92.06.1080	8	26		00.26.02.0030	4	40		00.26.05.0040	4
13		00.92.07.1070	5	27		00.68.04.0030	4	41		00.40.00.2010	1
14		00.68.01.0050	9	28		00.26.04.0060	6	42		00.40.00.1280	1
								43		00.90.04.0050	2



Ref.	Leg.	Code	Q.ty	Ref.	Leg.	Code	Q.ty	Ref.	Leg.	Code	Q.ty
1		01.60.20.0373	2	17		00.26.02.0030	4	33		00.74.00.0030	2
2		00.40.00.0490	1	18		00.68.04.0030	4	34		00.26.02.0060	2
3		00.40.00.1281	2	19		00.26.04.0060	6	35		00.68.01.0030	14
4		00.40.00.1260	1	20		01.50.20.0065	1	36		00.90.04.3130	4
5		00.40.00.1270	1	21		01.50.20.0071	1	37		00.48.00.0183	4
6		00.40.00.1290	2	22		01.50.20.0072	1	38		00.90.06.3100	4
7		00.68.01.0040	16	23		01.60.20.0620	1	39		00.40.00.0550	2
8		00.92.06.1080	8	24		01.60.20.0621	1	40		00.40.00.1220	1
9		00.92.07.1070	5	25		01.40.20.0070	2	41		00.26.04.0030	8
10		00.68.01.0050	9	26		00.92.03.1070	4	42		00.68.01.0010	8
11		00.92.07.1090	2	27		00.26.04.0040	2	43		00.26.05.0040	4
12		00.99.00.0210	1	28		00.68.08.0303	2	44		00.40.00.1210	1
13		00.99.00.0290	1	29		00.92.06.1040	2	45		00.26.04.0080	8
14		00.68.01.0020	10	30		00.92.08.0190	2	46		00.26.05.0040	1
15		00.90.06.3100	2	31		00.68.01.0060	4	47		00.40.00.2010	1
16		00.90.04.3040	4	32		00.26.04.0090	2				

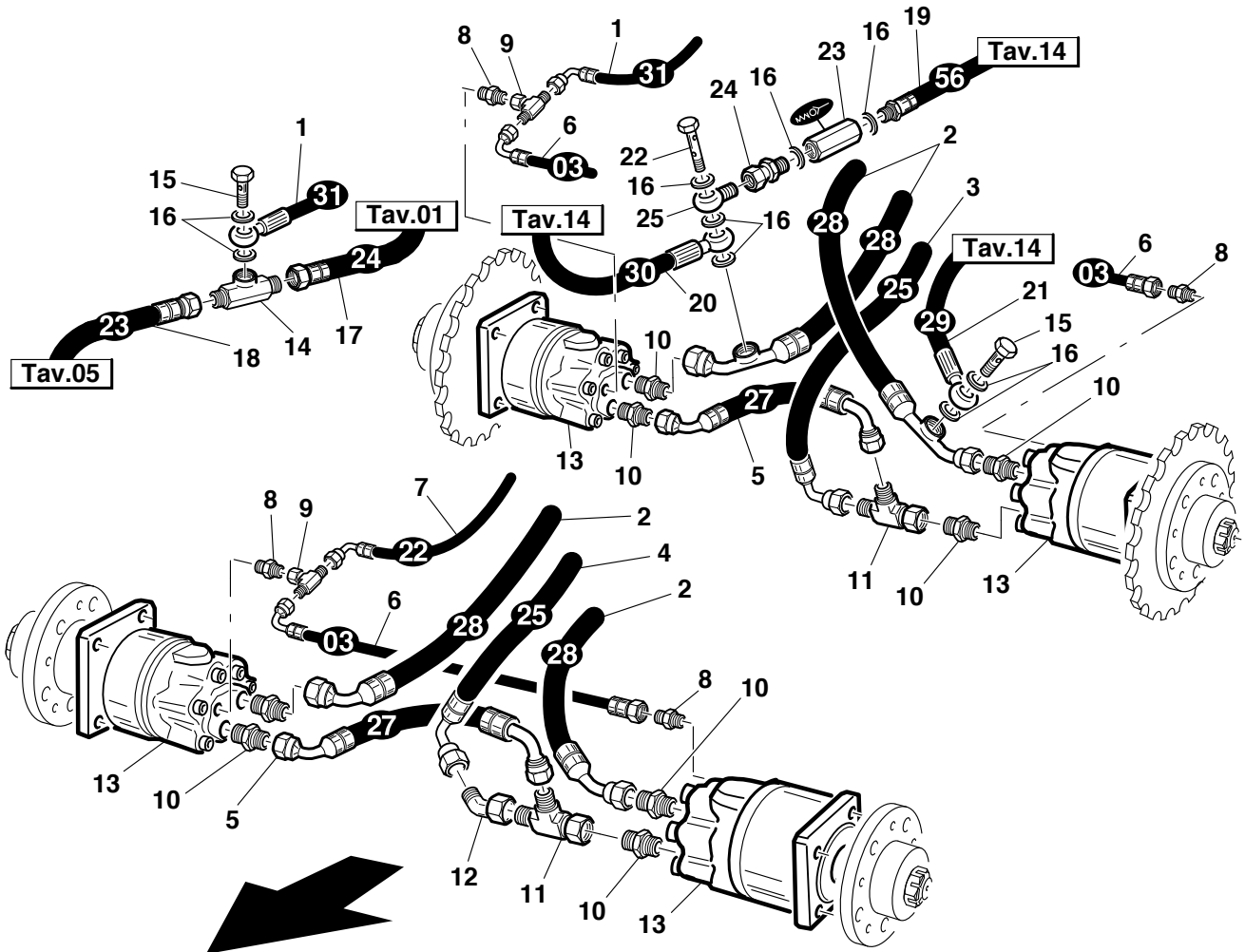


Ref.	Leg.	Code	Q.ty	Ref.	Leg.	Code	Q.ty
1		00.41.20.0080	2	10		00.58.20.0017	2
2		00.41.20.0079	2	11		00.42.00.0010	4
3		00.41.20.0049	2	12		00.41.00.0120	4
4		00.41.20.0050	2	13		00.41.00.0250	4
5		00.41.20.0046	2	14		00.41.00.0060	8
6		00.41.20.0045	2	15		00.41.00.0070	8
7		01.50.20.0102	1	16		00.90.06.3100	2
8		00.41.00.0881	4	17		00.68.01.0030	2
9		00.58.20.0011	2	18		00.26.05.0060	2

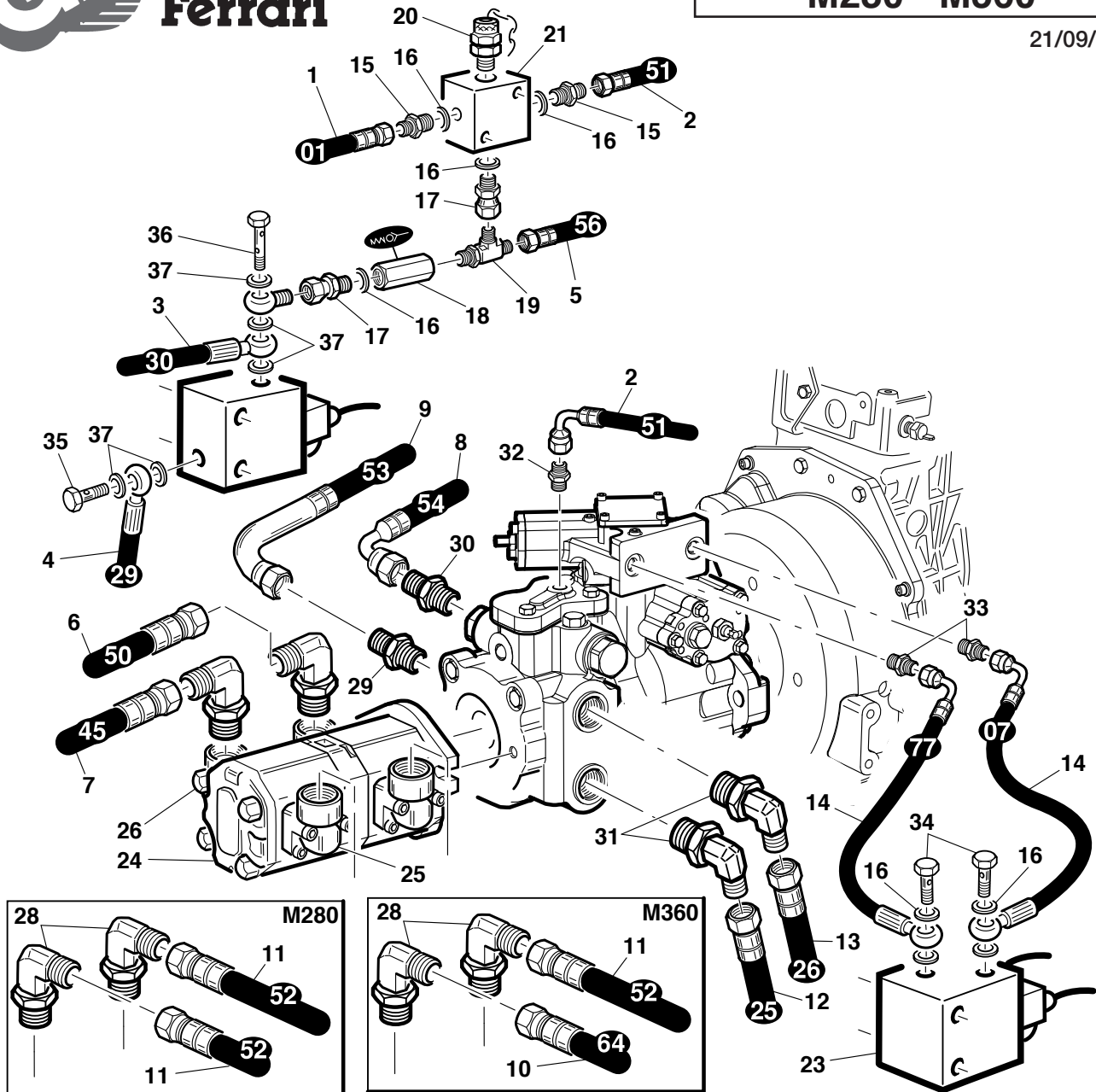


Ref.	Leg.	Code	Q.ty
1		00.41.20.0056	1
2		00.41.20.0057	1
3		00.41.00.0875	2
4		00.41.00.0280	2
5		00.41.00.0070	4
6		00.42.00.0010	1
7		00.42.00.0030	1
8		00.58.20.0013	1
9		00.07.01.0184	0,15m

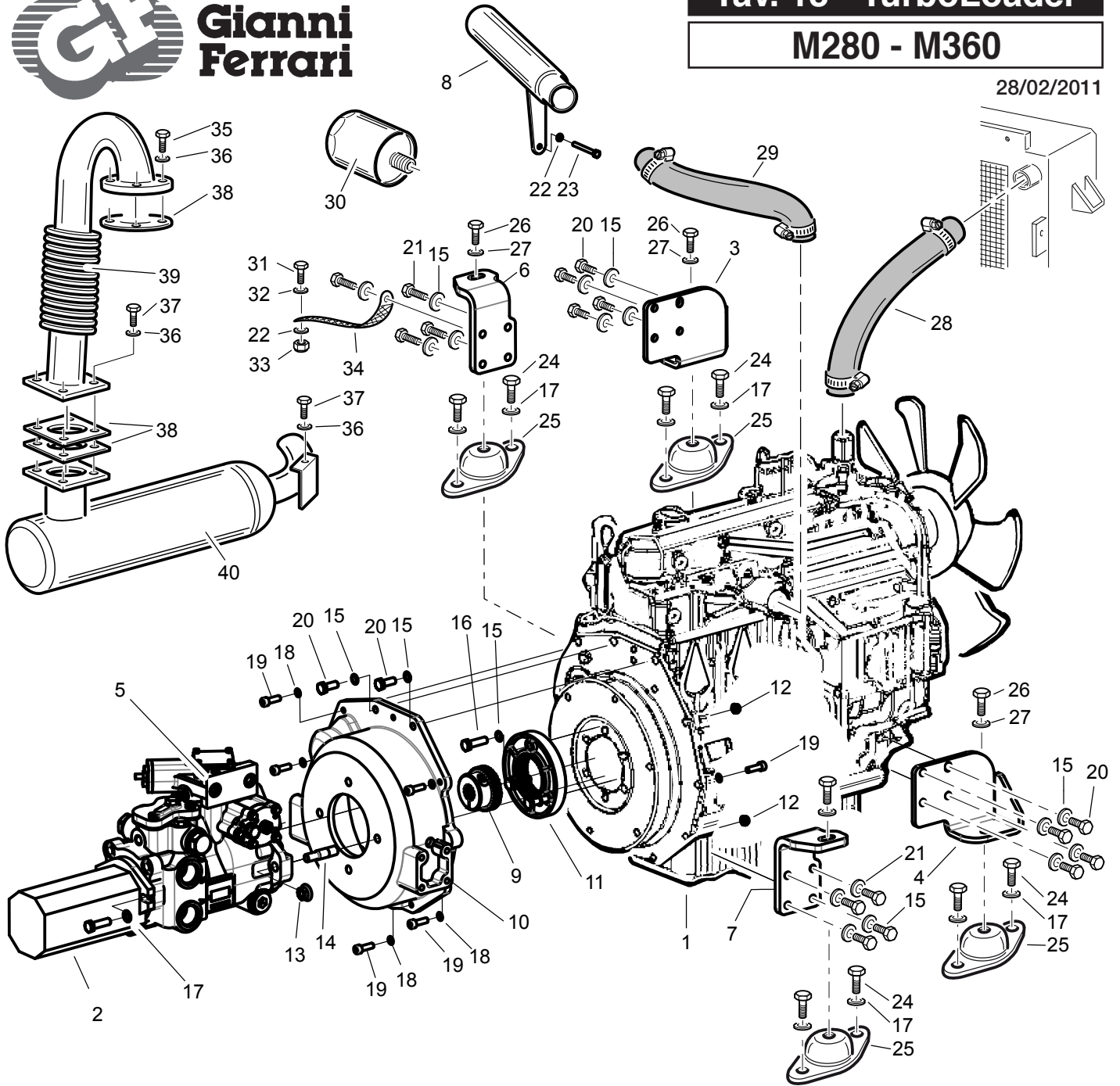




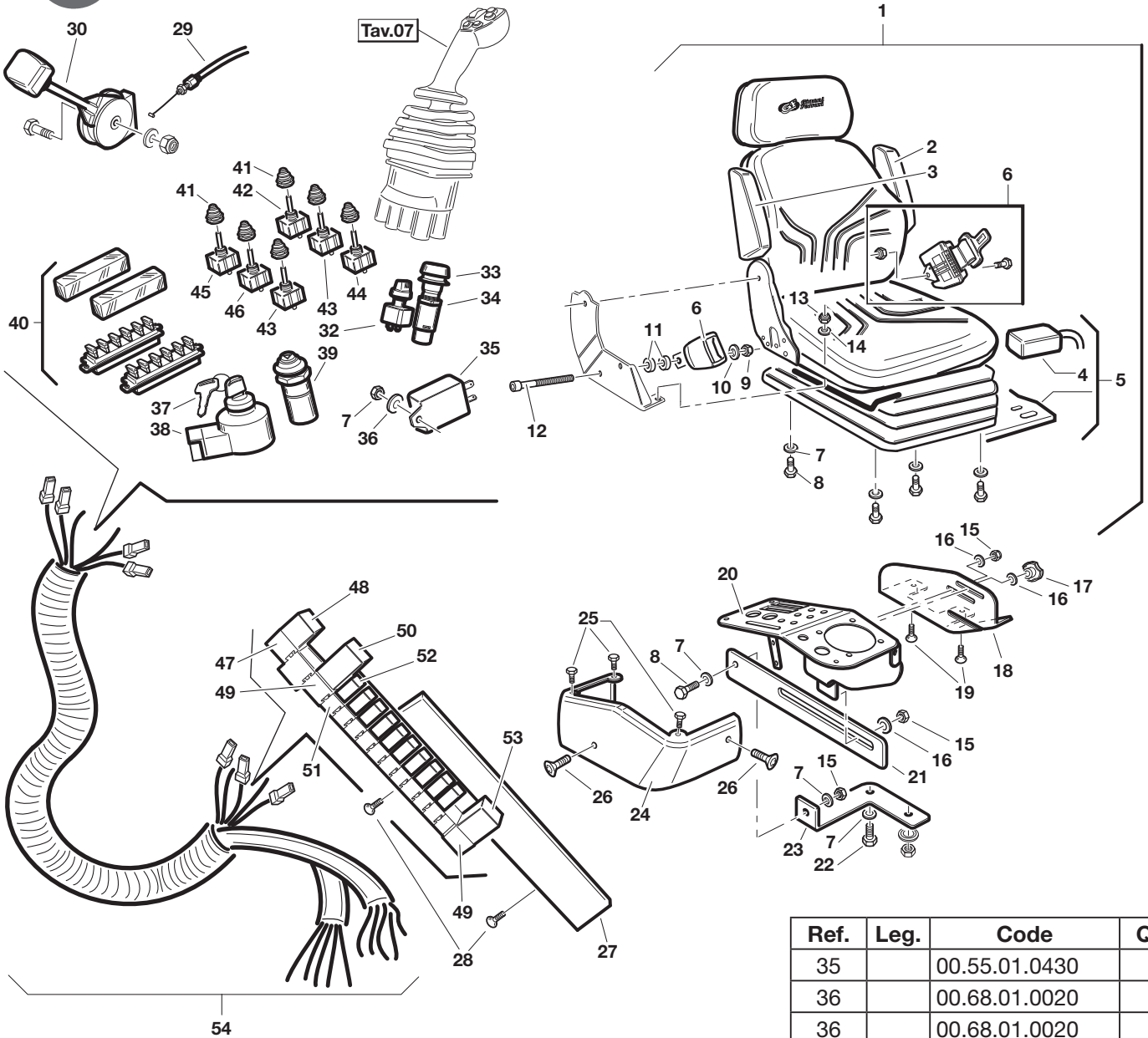
Ref.	Leg.	Code	Q.ty	Ref.	Leg.	Code	Q.ty
1		00.41.20.0040	1	13		00.54.00.1170	4
2		00.41.20.0037	4	14		00.41.00.0096	1
3		00.41.20.0035	1	15		00.41.00.0120	1
4	M360	00.41.20.0076	1	16		00.41.00.0060	9
4	M280	00.41.20.0034	1	17		00.41.20.0082	1
5		00.41.20.0036	2	18		00.41.20.0081	1
6		00.41.20.0012	2	19		00.41.20.0065	1
7		00.41.20.0032	1	20		00.41.20.0039	1
8		00.41.00.0810	4	21		00.41.20.0038	1
9		00.41.00.0730	2	22		00.41.00.0124	1
10		00.41.00.1275	8	23		00.41.00.0292	1
11		00.41.00.1265	2	24		00.41.00.2821	1
12		00.41.00.0965	1	25		00.41.00.0240	1



Ref.	Leg.	Code	Q.ty	Ref.	Leg.	Code	Q.ty	Ref.	Leg.	Code	Q.ty
1		00.41.20.0010	1	12	M280	00.41.20.0034	1	27		00.41.00.0876	2
2		00.41.20.0060	2	13		00.41.20.0035	1	28		00.41.00.0878	2
3		00.41.20.0039	1	14		00.41.20.0016	2	29		00.41.00.0828	1
4		00.41.20.0038	1	15		00.41.00.0450	2	30		00.41.00.1276	1
5		00.41.20.0065	1	16		00.41.00.0060	8	31		00.41.00.2869	2
6	M360	00.41.20.0086	1	17		00.41.00.2821	2	32		00.41.00.0812	1
6	M280	00.41.20.0059	1	18		00.41.00.0292	1	33		00.41.00.0810	2
7	M360	00.41.20.0085	1	19		00.41.00.2101	1	34		00.41.00.0120	2
7	M280	00.41.20.0054	1	20		00.41.00.3085	1	35		00.41.00.0250	1
8		00.41.20.0062	1	21		00.41.00.1920	1	36		00.41.00.0253	1
9		00.41.20.0063	1	22		00.41.00.3580	1	37		00.41.00.0070	5
10	M360	00.41.20.0073	1	23		00.41.00.3423	1	38		00.41.00.0241	1
11	M360	00.41.20.0061	1	24		00.41.00.3550	1	39		00.41.00.3540	1
11	M280	00.41.20.0061	2	25		00.41.00.0189	2				
12	M360	00.41.20.0076	1	26		00.41.00.0188	2				

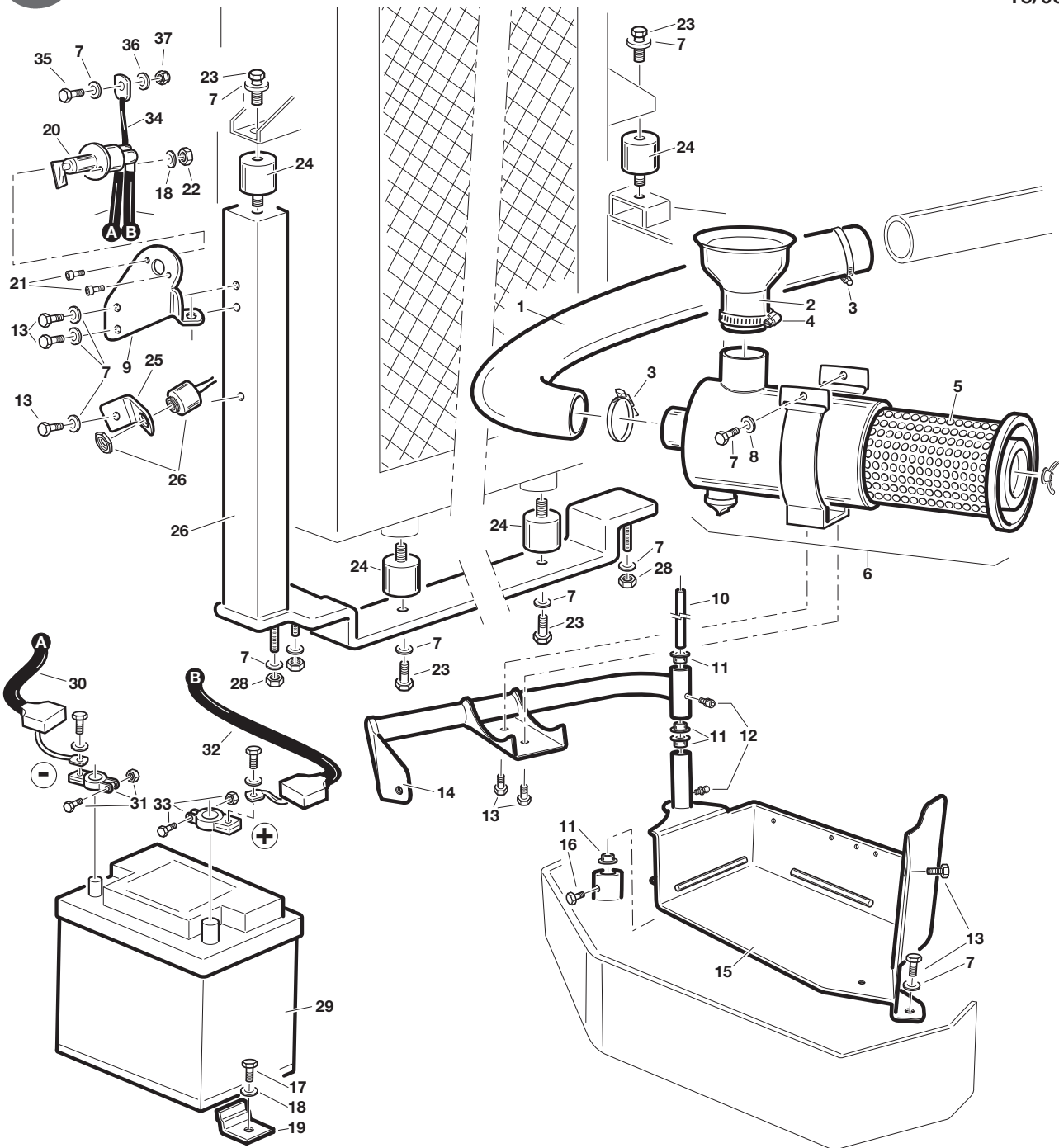


Ref.	Leg.	Code	Q.ty	Ref.	Leg.	Code	Q.ty	Ref.	Leg.	Code	Q.ty
1	1505	00.54.01.0040	1	14		01.40.20.0011	2	28		00.89.14.0001	1
1	1100	00.54.01.0030	1	15		00.68.12.0010	21	29		00.07.07.0322	1
2		00.41.00.3540	1	16		00.92.06.3090	3	30		00.32.03.0050	1
3		01.60.20.0099	1	17		00.68.01.0040	10	31		00.92.03.1110	1
4		01.60.20.0082	1	18		00.68.12.0008	8	32		00.68.03.0030	1
5		00.41.00.3550	1	19		00.90.06.0100	8	33		00.26.04.0040	1
6		01.60.20.0177	1	20		00.92.06.3050	10	34		00.40.00.0282	1
7		01.60.20.0180	1	21		00.92.06.3081	8	35		00.92.05.1070	4
8		01.50.20.0095	1	22		00.68.01.0020	2	36		00.68.01.0030	9
9		00.55.01.0843	1	23		00.92.03.1160	1	37		00.92.05.1110	5
10		00.55.01.0851	1	24		00.92.06.1080	8	38		00.55.01.0210	3
11		00.55.01.0852	1	25		00.74.07.0020	4	39		01.50.20.0075	1
12		00.26.05.0060	2	26		00.92.07.1070	4	40		00.46.20.0010	1
13		00.26.09.0070	2	27		00.68.01.0050	4				

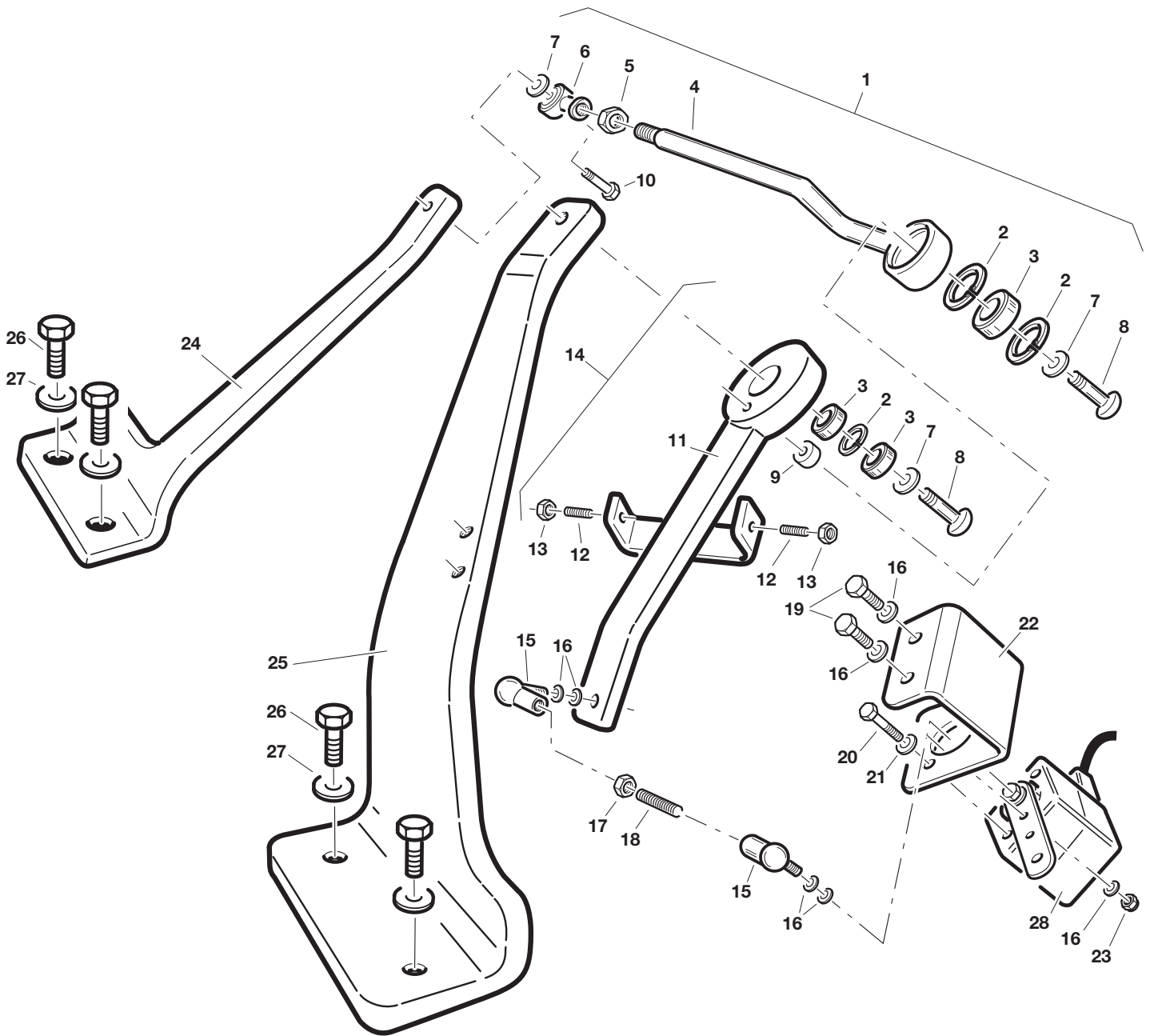


Ref.	Leg.	Code	Q.ty
35		00.55.01.0430	1
36		00.68.01.0020	1
36		00.68.01.0020	1
37		00.40.00.0091	1
38		00.55.01.0091	1
39		00.40.00.0882	1
40		00.40.00.0922	2
41		00.40.00.2514	6
42		00.40.00.2508	1
43		00.40.00.2509	2
44		00.40.00.2510	1
45		00.40.00.2511	1
46		00.40.00.2512	1
47		00.40.00.0169	1
48		00.40.00.0160	1
49		00.40.00.2515	2
50		00.40.00.2516	1
51		00.40.00.0164	11
52		00.40.00.0163	11
53		00.40.00.2517	1
54		00.40.00.2280	1

Ref.	Leg.	Code	Q.ty	Ref.	Leg.	Code	Q.ty
1		00.73.00.0030	1	17		00.45.00.0007	1
1	H	00.73.00.0050	1	18		01.60.20.0524	1
2		00.73.00.0034	1	19		00.95.04.0060	2
3		00.73.00.0033	1	20		01.50.20.0133	1
4		00.40.00.0561	1	21		01.60.20.0525	1
5		00.40.00.0562	1	22		00.92.05.1040	1
6		00.73.00.0035	1	23		01.60.20.0522	1
7		00.68.01.0030	8	24		01.30.20.0013	1
8		00.92.05.1070	5	25		00.91.04.0050	3
9		00.26.04.0070	1	26		00.90.04.3070	2
10		00.68.01.0040	1	27		01.50.20.0020	1
11		01.40.00.2120	2	28		00.95.04.0030	2
12		00.90.08.3270	1	29		00.25.01.0170	1
13		00.26.04.0040	1	30		00.25.02.0030	1
14		00.68..02.0030	1	32		00.40.00.0910	1
15		00.26.04.0060	3	33		00.40.00.2236	1
16		00.68.02.0050	3	34		00.40.00.2235	1



Ref.	Leg.	Code	Q.ty	Ref.	Leg.	Code	Q.ty	Ref.	Leg.	Code	Q.ty
1		00.89.13.0051	1	14		01.50.20.0069	1	27		01.50.20.0067	1
2		00.07.07.0330	1	15		01.50.20.0068	1	28		00.26.04.0060	3
3		00.29.02.0060	2	16		00.92.03.1140	1	29		00.09.00.0040	1
4		00.29.02.0070	1	17		00.92.03.1070	1	30		00.40.00.0287	1
5		00.32.03.0060	1	18		00.68.01.0020	3	31		00.40.00.0293	1
6		00.55.01.0410	1	19		01.60.20.0069	1	32		00.40.00.0286	1
7		00.68.01.0030	13	20		00.40.00.2090	1	33		00.40.00.0292	1
8		00.92.05.1110	1	21		00.92.03.1090	2	34		00.40.00.0288	1
9		00.60.20.0367	1	22		00.26.05.0040	2	35		00.92.05.1081	1
10		01.40.20.0062	1	23		00.92.05.1040	4	36		00.68.02.0050	1
11		01.50.00.0670	4	24		00.74.03.0070	4	37		00.26.03.0060	1
12		00.42.00.0010	2	25		01.50.00.5520	1				
13		00.92.05.1070	6	26		00.40.00.0221	1				



Ref.	Leg.	Code	Q.ty	Ref.	Leg.	Code	Q.ty	Ref.	Leg.	Code	Q.ty
1		01.90.20.0106	1	10		00.92.06.1080	1	19		00.92.03.1040	2
2		00.03.09.0026	3	11		01.50.20.0100	1	20		00.92.02.1020	2
3		00.22.00.0111	3	12		00.96.05.0120	2	21		00.68.01.0010	2
4		01.50.20.0101	1	13		00.26.02.0060	2	22		01.60.20.0379	1
5		00.26.03.0080	1	14		01.90.20.0105	1	23		00.26.05.0040	1
6		00.78.01.0012	1	15		00.78.00.0010	2	24		01.60.20.0275	1
7		00.68.01.0040	2	16		00.68.01.0020	7	25		01.60.20.0276	1
8		00.90.07.3120	2	17		00.26.02.0040	1	26		00.92.06.1080	2
9		01.40.20.0089	1	18		00.96.04.0110	1	28		00.40.00.2518	1

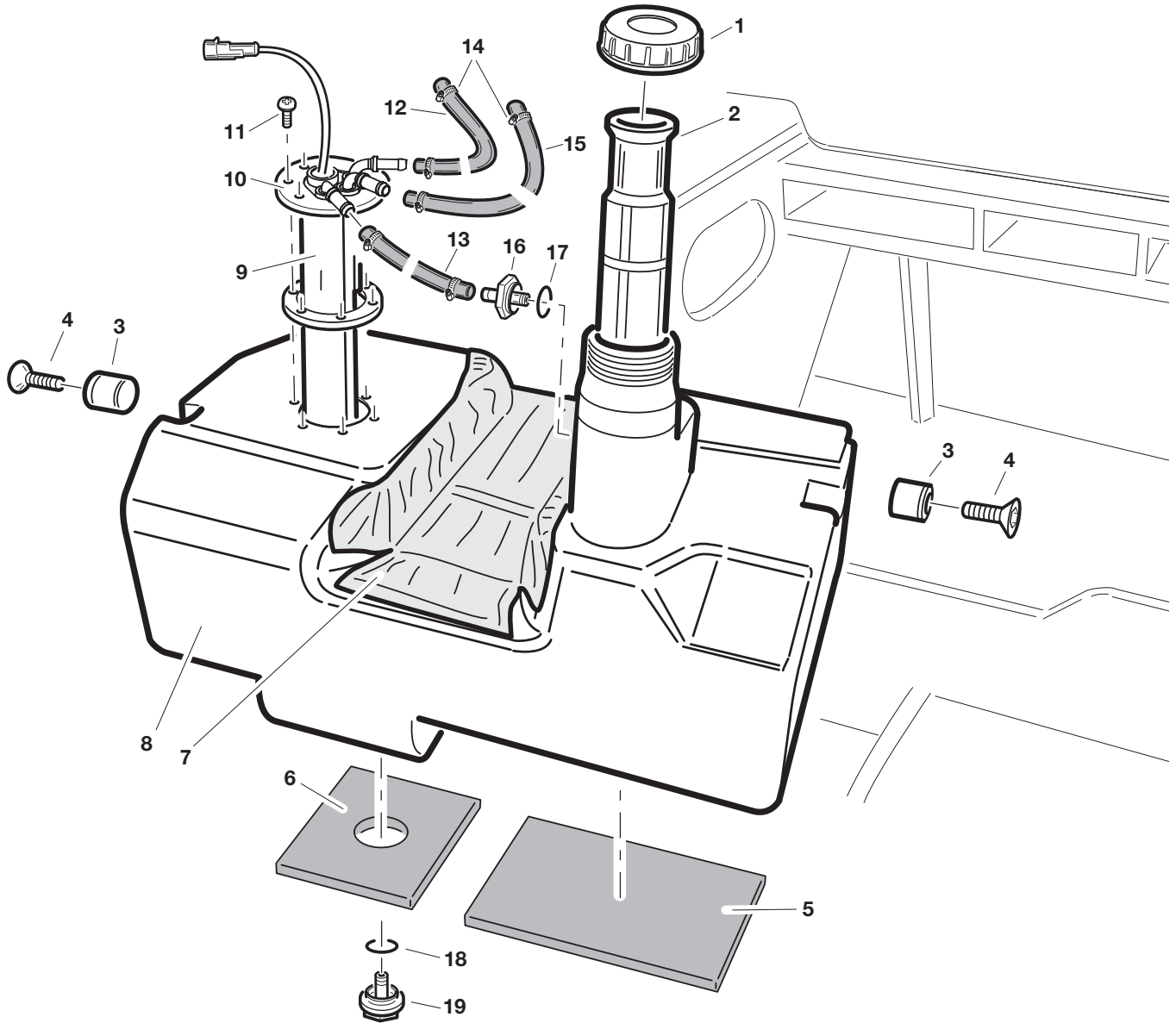


**Gianni  
Ferrari**

**Tav. 22 - TurboLoader**

**M220 - M280 - M360**

15/03/2011



Ref.	Leg.	Code	Q.ty	Ref.	Leg.	Code	Q.ty
1		00.75.00.0012	1	11		00.94.06.3050	6
2		00.75.00.0013	1	12		00.89.01.0000	2,0m
3		00.74.00.4131	2	13		00.89.01.0000	0,35m
4		00.95.05.0060	2	14		00.29.02.0016	6
5		00.07.05.0010	1	15		00.89.02.0000	1
6		00.07.05.0011	1	16		00.75.00.0035	1
7		00.07.09.0360	1	17		00.06.10.0202	1
8		00.75.20.0010	1	18		00.06.10.0154	1
9		00.07.01.0170	1	19		00.75.00.0036	1
10		00.40.00.2290	1				



**P R O F E S S I O N A L M O W E R S**

GIANNI FERRARI s.r.l. • Via Vespucci, 53 (Zona Ind. Ranaro) • 42046 REGGIOLO (RE) Italy • Tel. 0522 / 973697 • Fax 0522 / 973707

[www.gianniferrari.com](http://www.gianniferrari.com)    [e-mail:info@gianniferrari.com](mailto:info@gianniferrari.com)



GF.061-PR05 TURBO LOADER

(AMA Dis. 3611 del 10/12/2008)

LEGENDA / LISTE / DESCRIPTION

A	Azzurro	Bleu clair	Light bleu
B	Bianco	Blanc	White
C	Arancio	Orange	Orange
G	Giallo	Jaune	Yellow
H	Grigio	Gris	Grey
L	Blu	Bleu	Bleu
M	Marrone	Marron	Brown
N	Nero	Noir	Black
R	Rosso	Rouge	Red
S	Rosa	Rose	Pink
V	Verde	Vert	Green
Z	Viola	Violet	Violet

Fuses legend

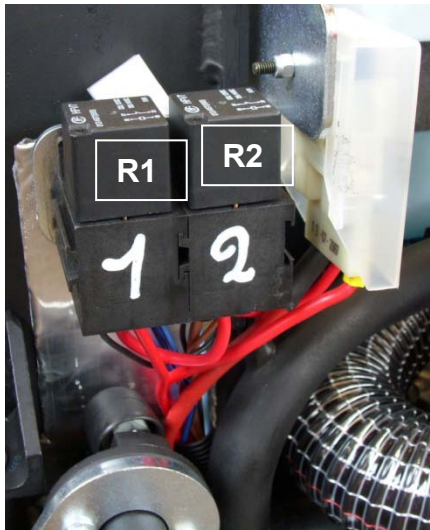
F6	5A	F12	10A
F5	7.5A	F11	75A
F4	7.5A	F10	15A
F3	7.5A	F9	5A
F2	5A	F8	15A
F1	10A	F7	10A

## Electrical diagram Turboloader page 2

### Relays numbering and positioning

**R1= starting relay**  
**R2= glow plugs pre-heating**

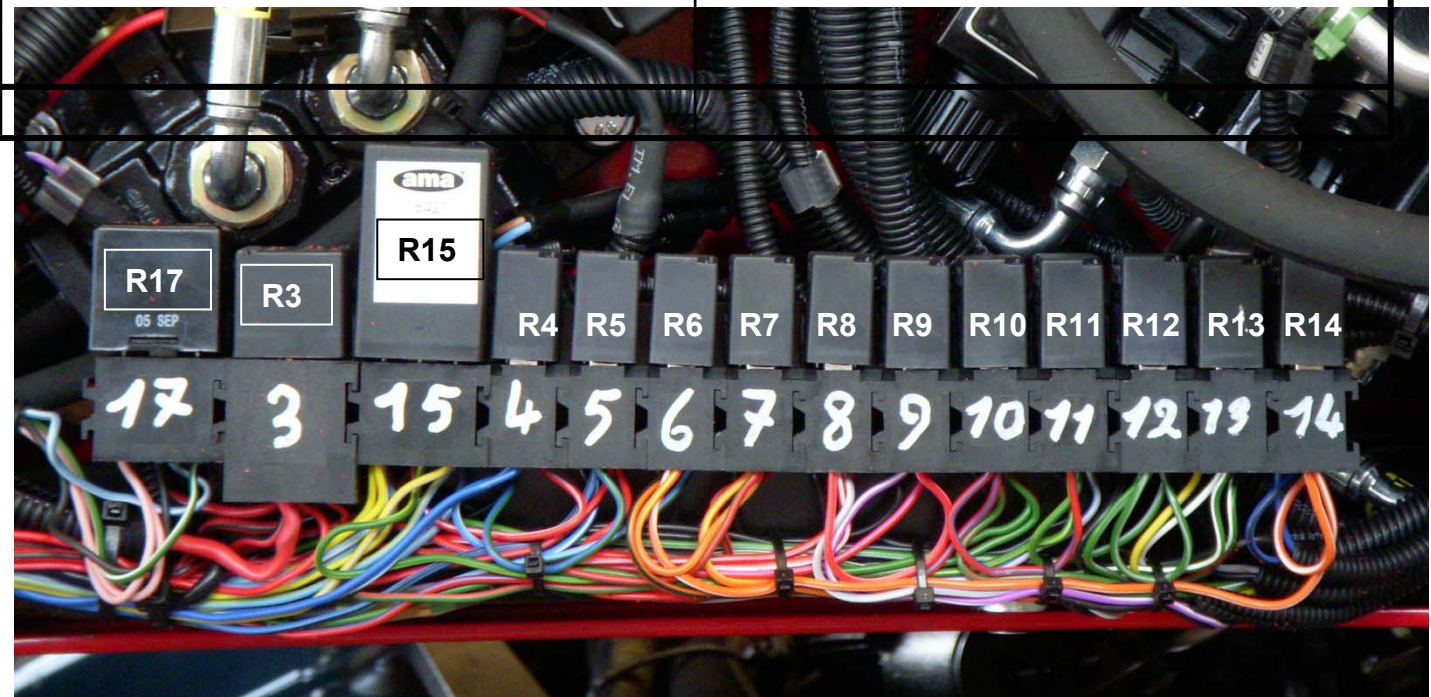
situated on the right side of the radiator on the battery-remover



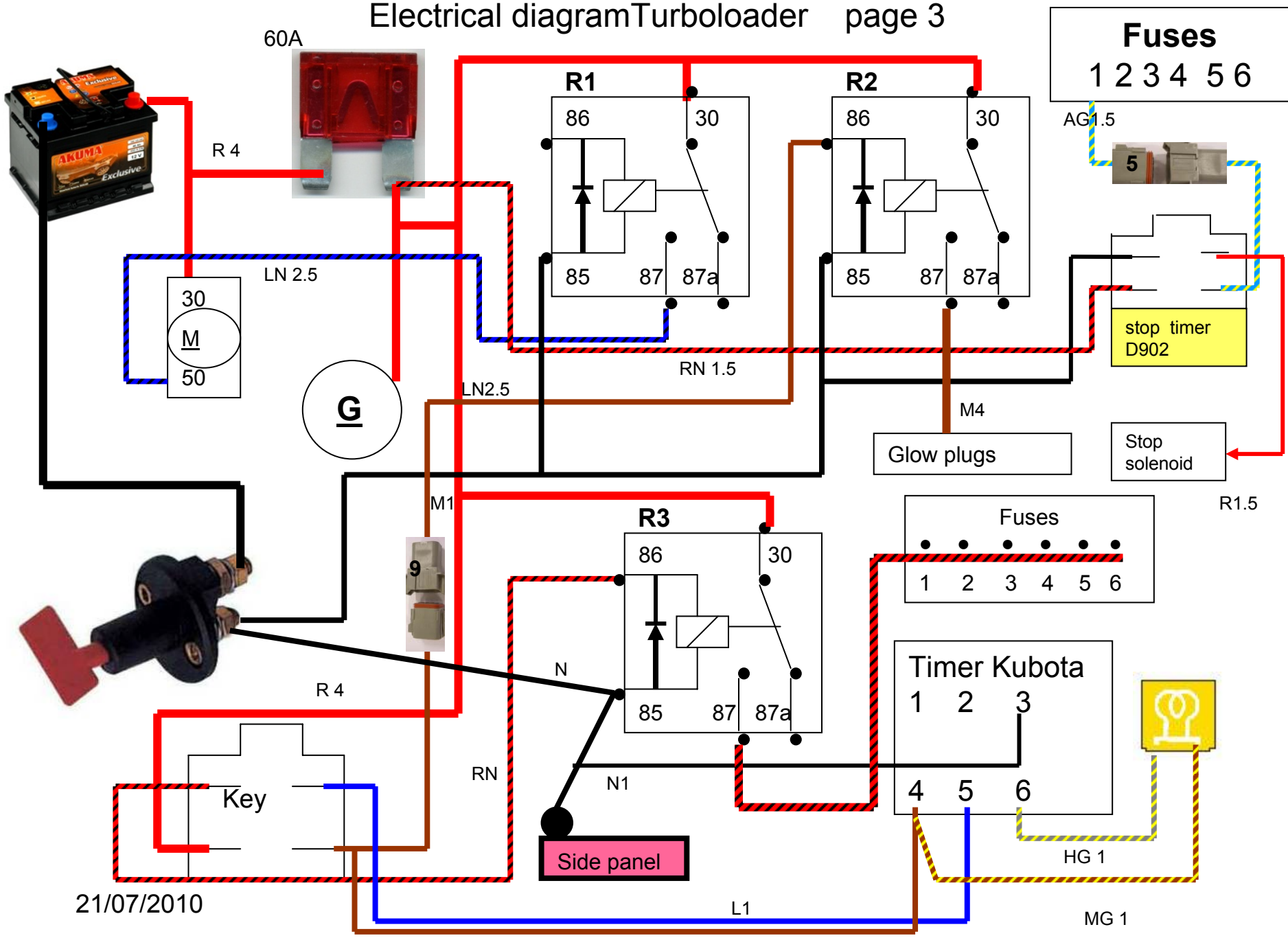
R3= fuses boxes feeding page 3  
 R4= starting block page 4-5-7  
 R5= starting consent, from seat page 4  
 R6= services consent from Joistik page 4-5-12  
 R7= forward consent, from seat page 4  
 R8= control EV-D1 page 6  
 R9= control EV-D2 page 6  
 R10= control EV-E1 page 7  
 R11= control EV-E2 page 7  
 R12= floating safety page 8  
 R13= overturning bucket safety page 8

R14= block remotion safety page 12  
 R15= diodes unit page 5-7  
 R16= horn (for road use) page 11  
 R17 = direction indicator intermittence

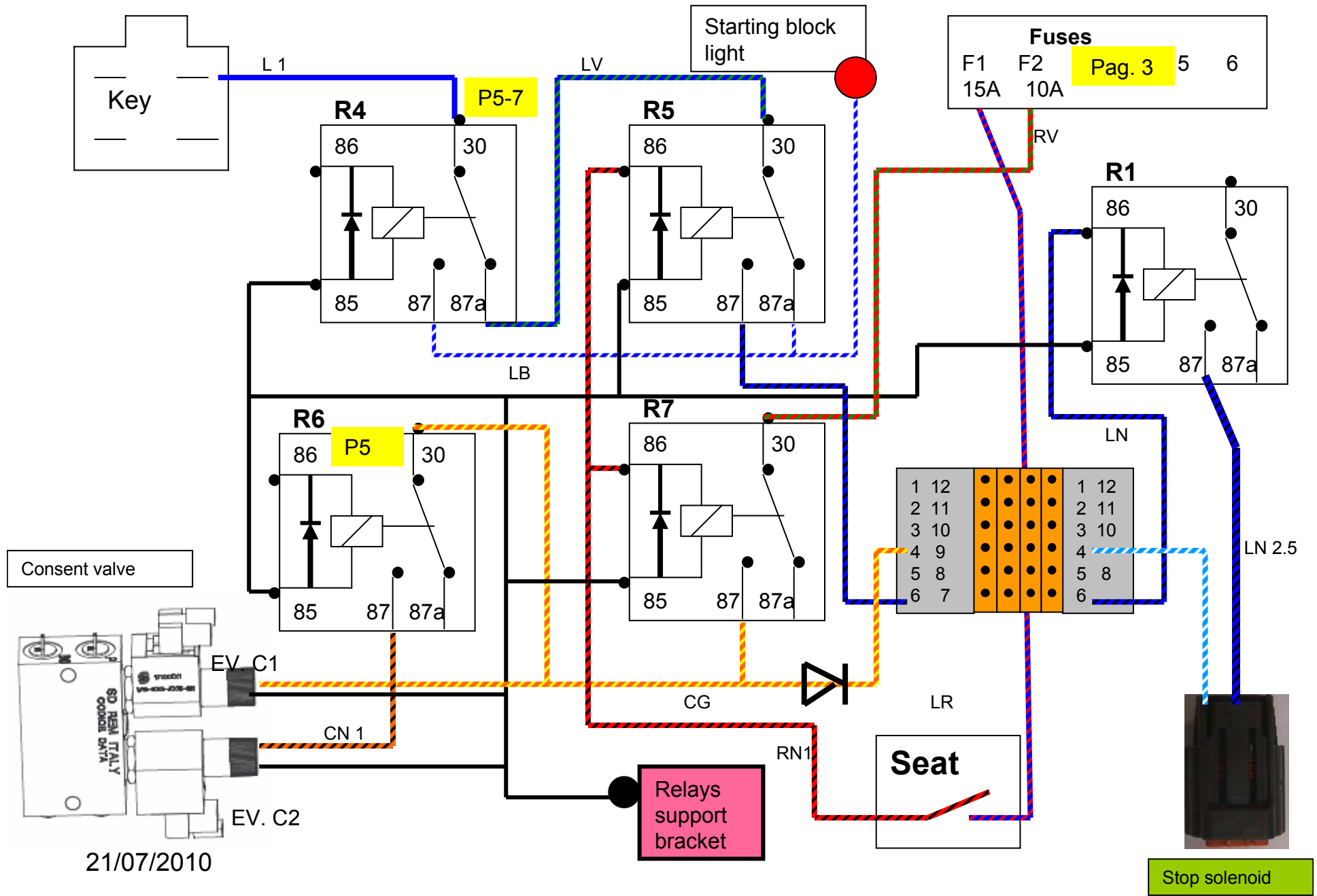
Situated on the right side near the distributor



# Electrical diagram Turboloader page 3



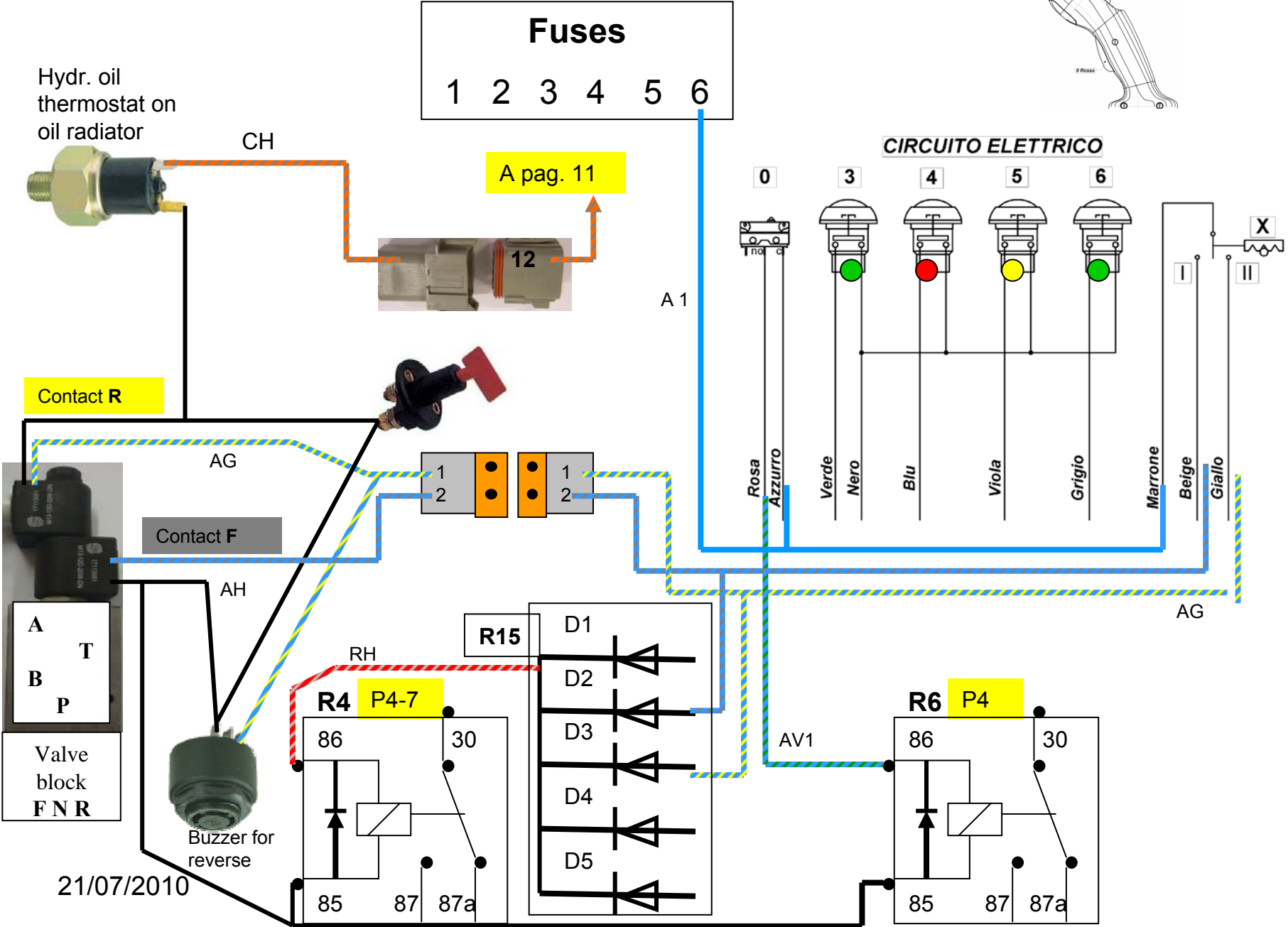
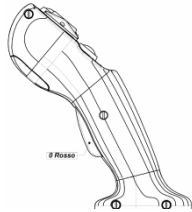
# Electrical diagram Turboloader page 4



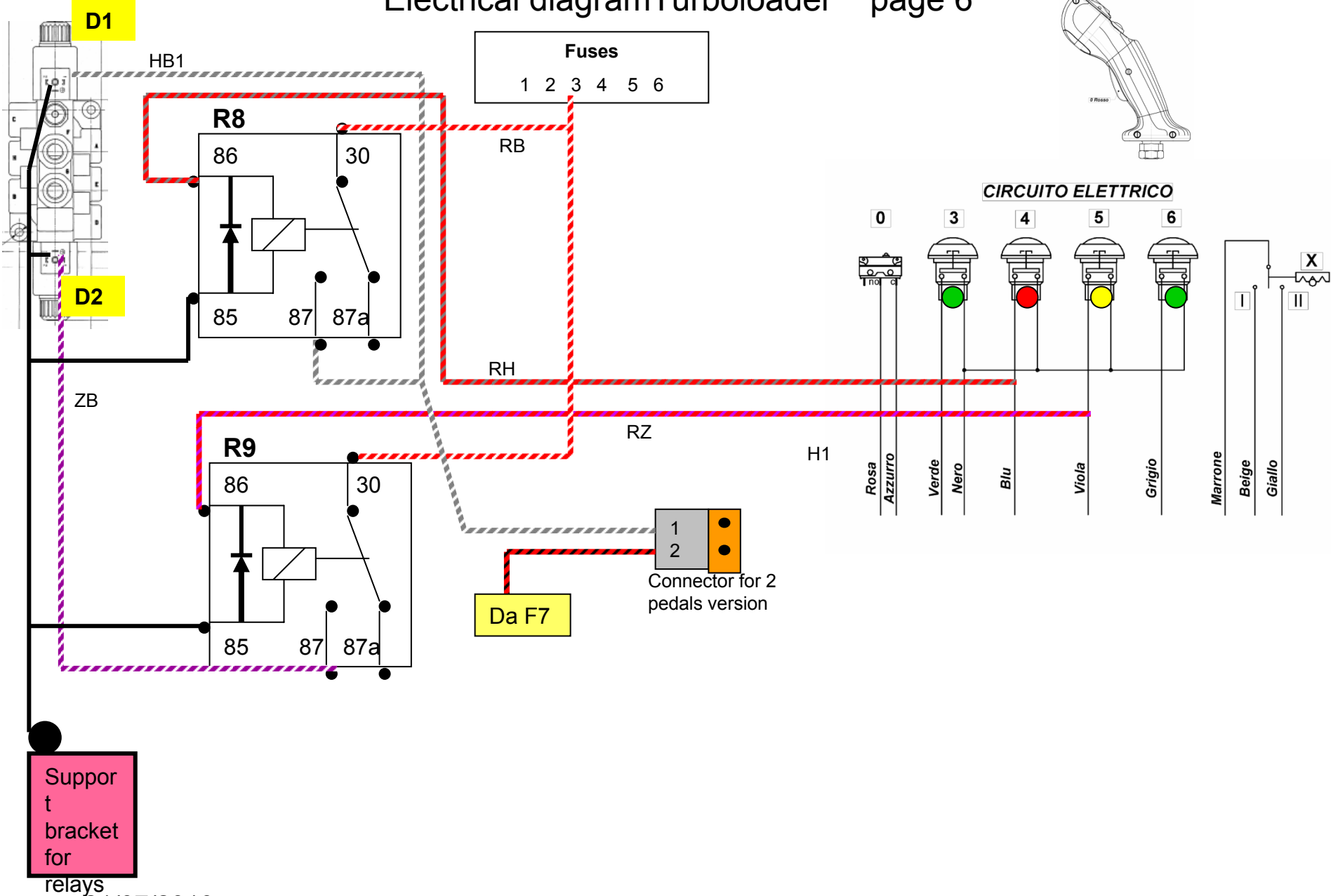
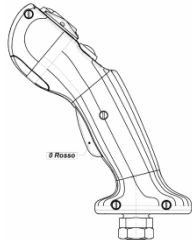
21/07/2010

Stop solenoid

# Electrical diagram Turboloader page 5



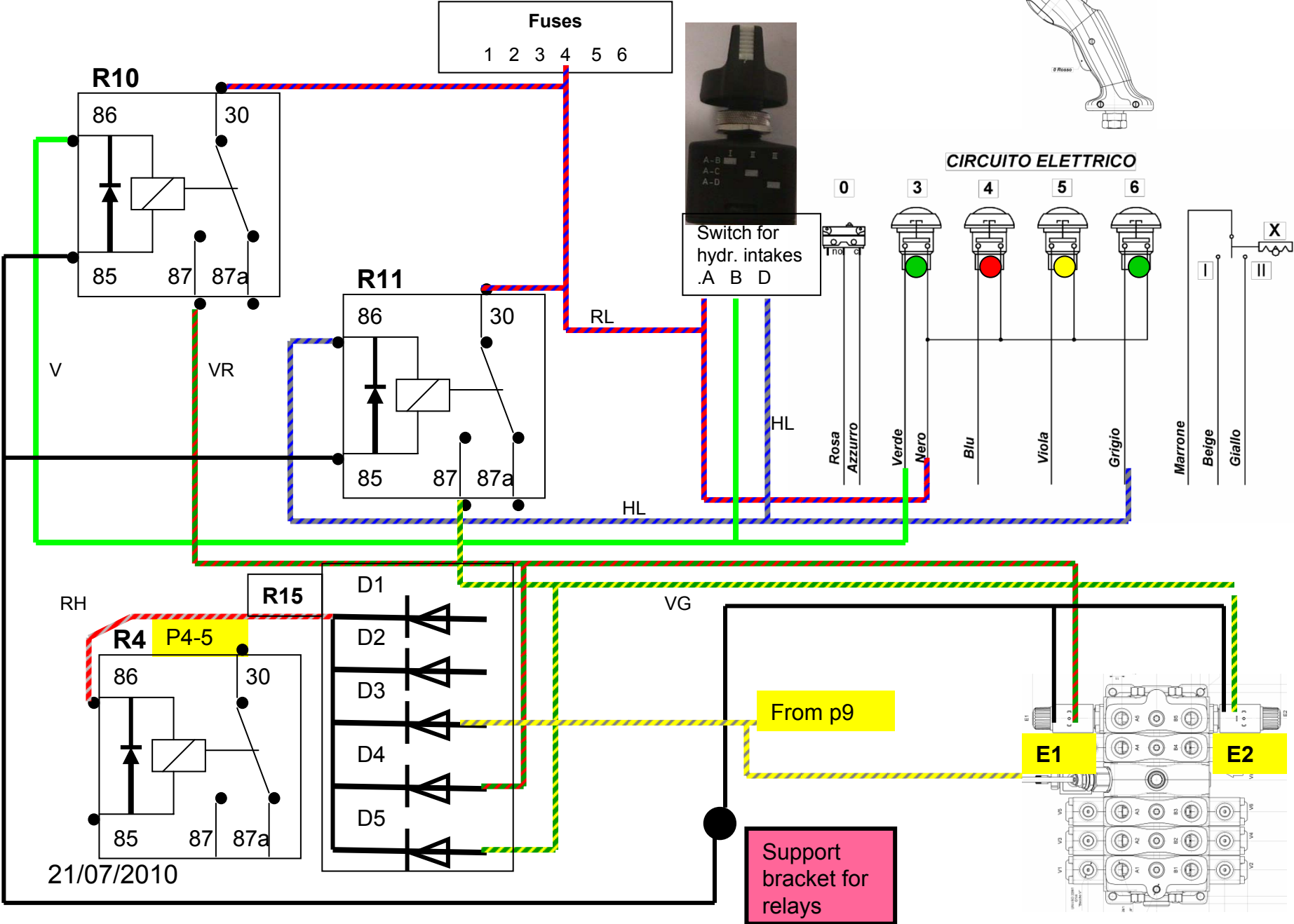
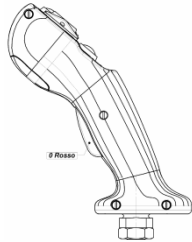
# Electrical diagram Turboloader page 6



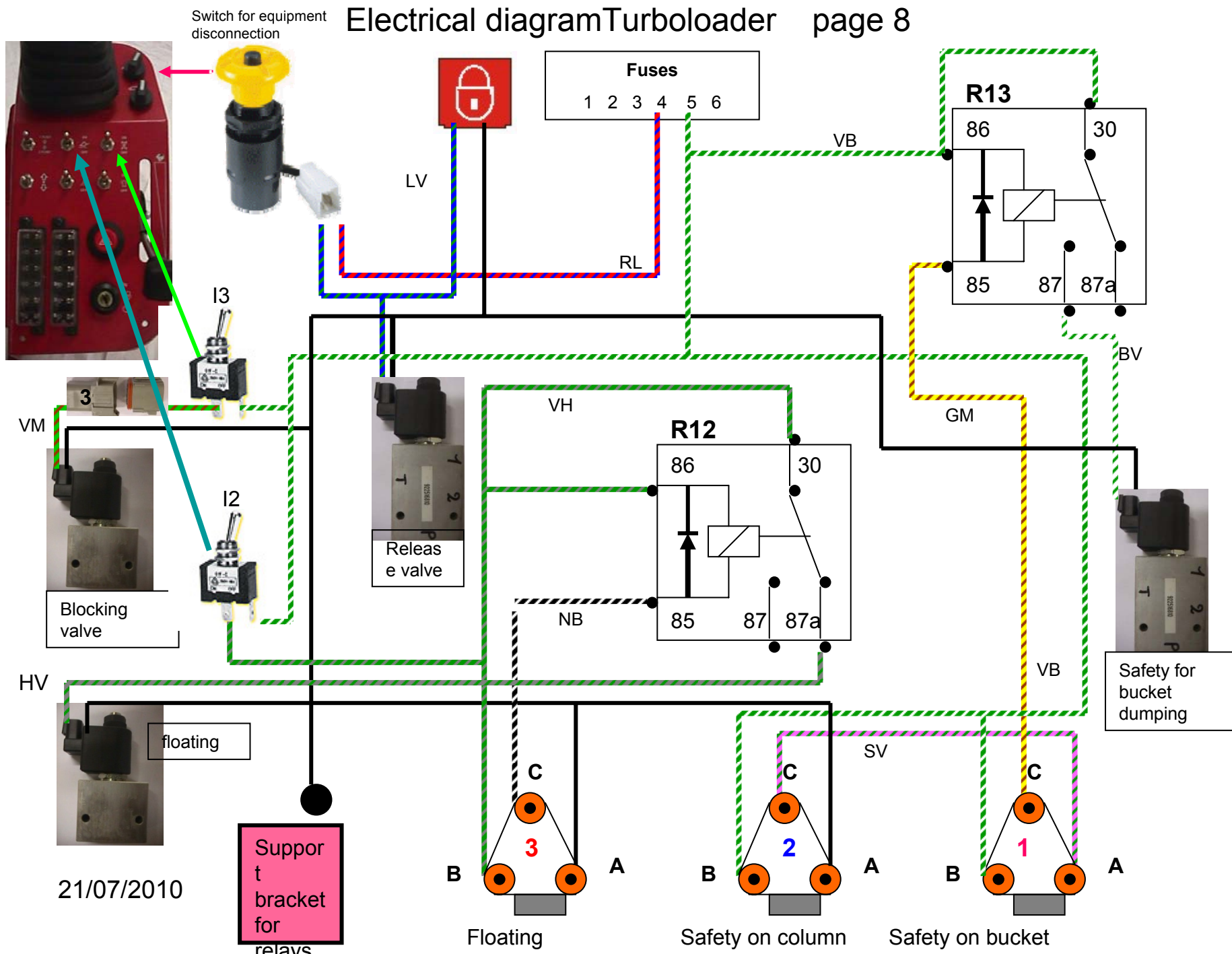
Support  
bracket  
for  
relays

21/07/2010

# Electrical diagram Turboloader page 7

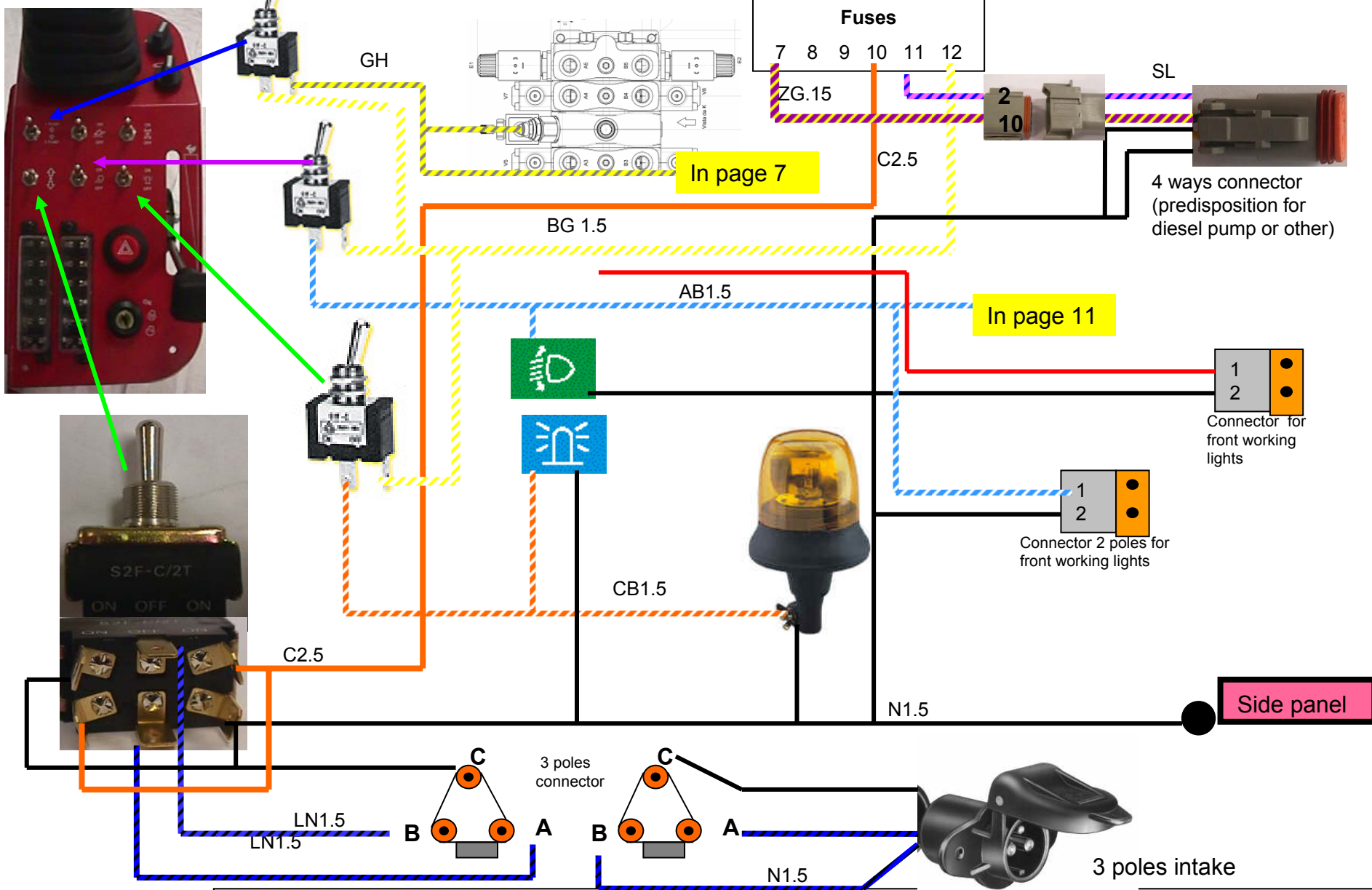


# Electrical diagram Turboloader page 8





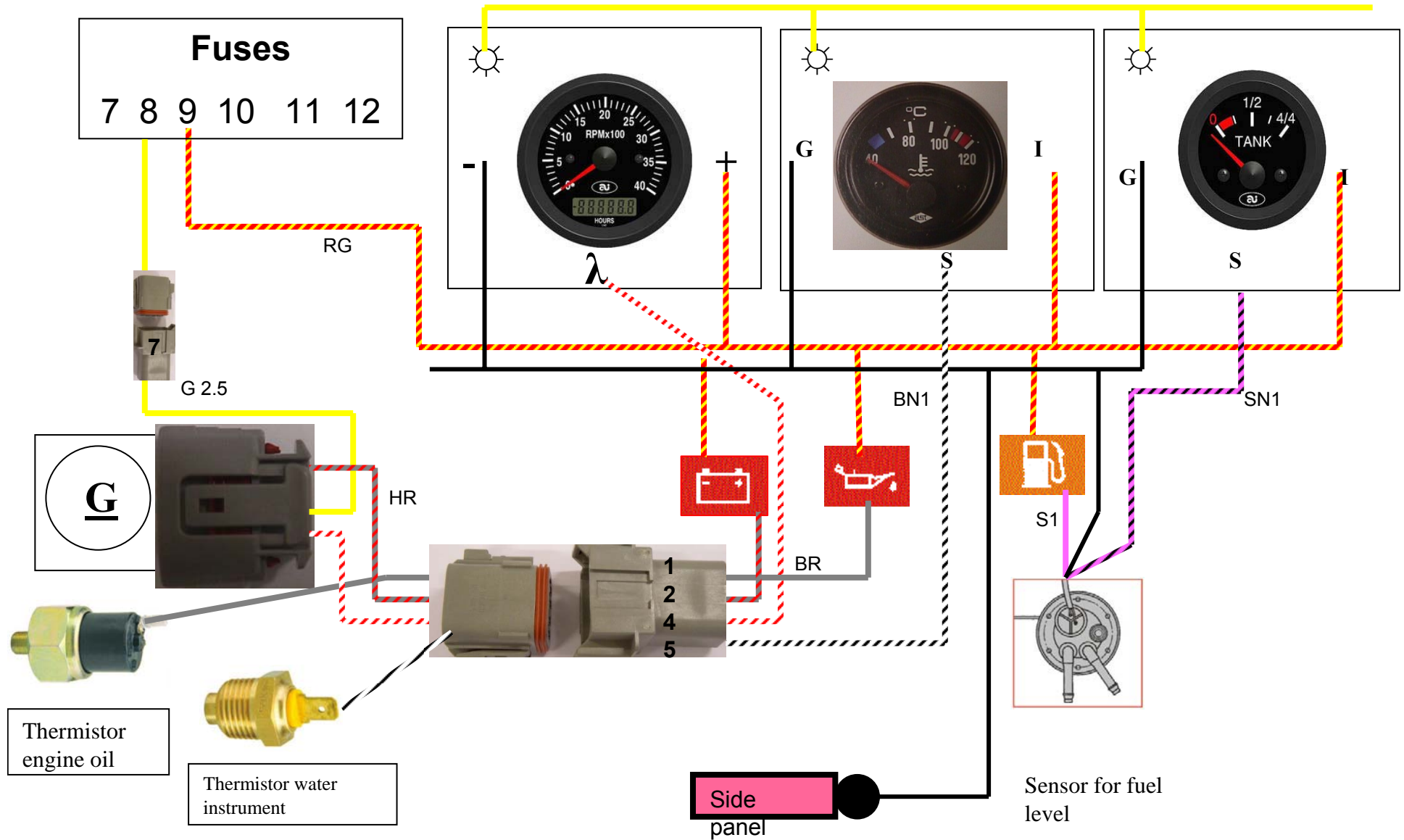
# Electrical diagram Turboloader page 9



21/07/2010

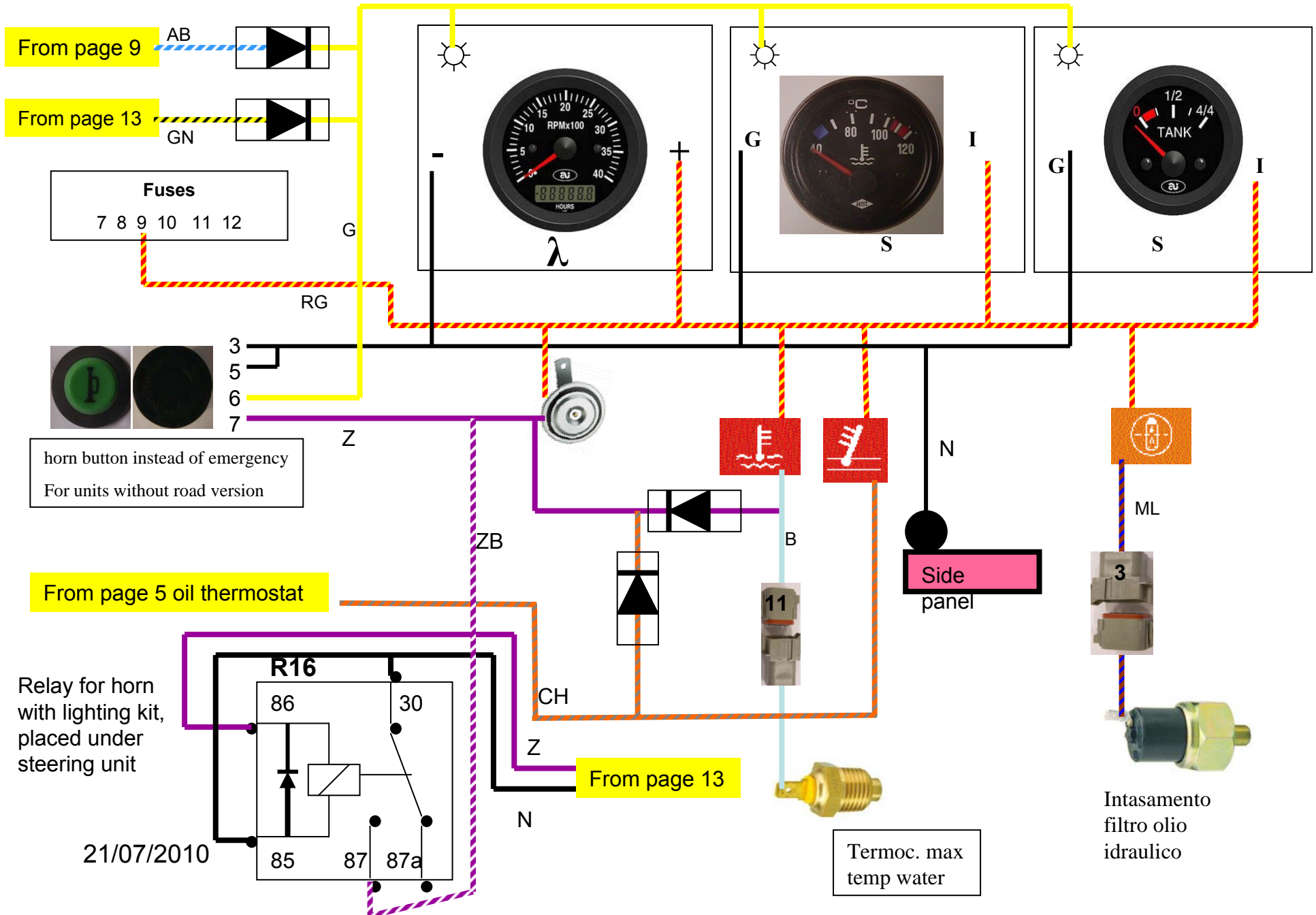
**Note:** with unit in standard version the instruments are lighted by the working lights circuit. For road version they are lighted by the lights circuit.

# Electrical diagram Turboloader page 10



21/07/2010

# Electrical diagram Turboloader page 11



From page 9 AB

From page 13 GN

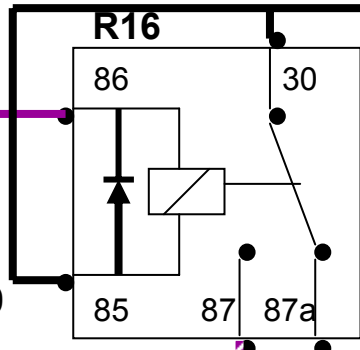
**Fuses**  
7 8 9 10 11 12

horn button instead of emergency  
For units without road version

From page 5 oil thermostat

Relay for horn with lighting kit,  
placed under steering unit

21/07/2010

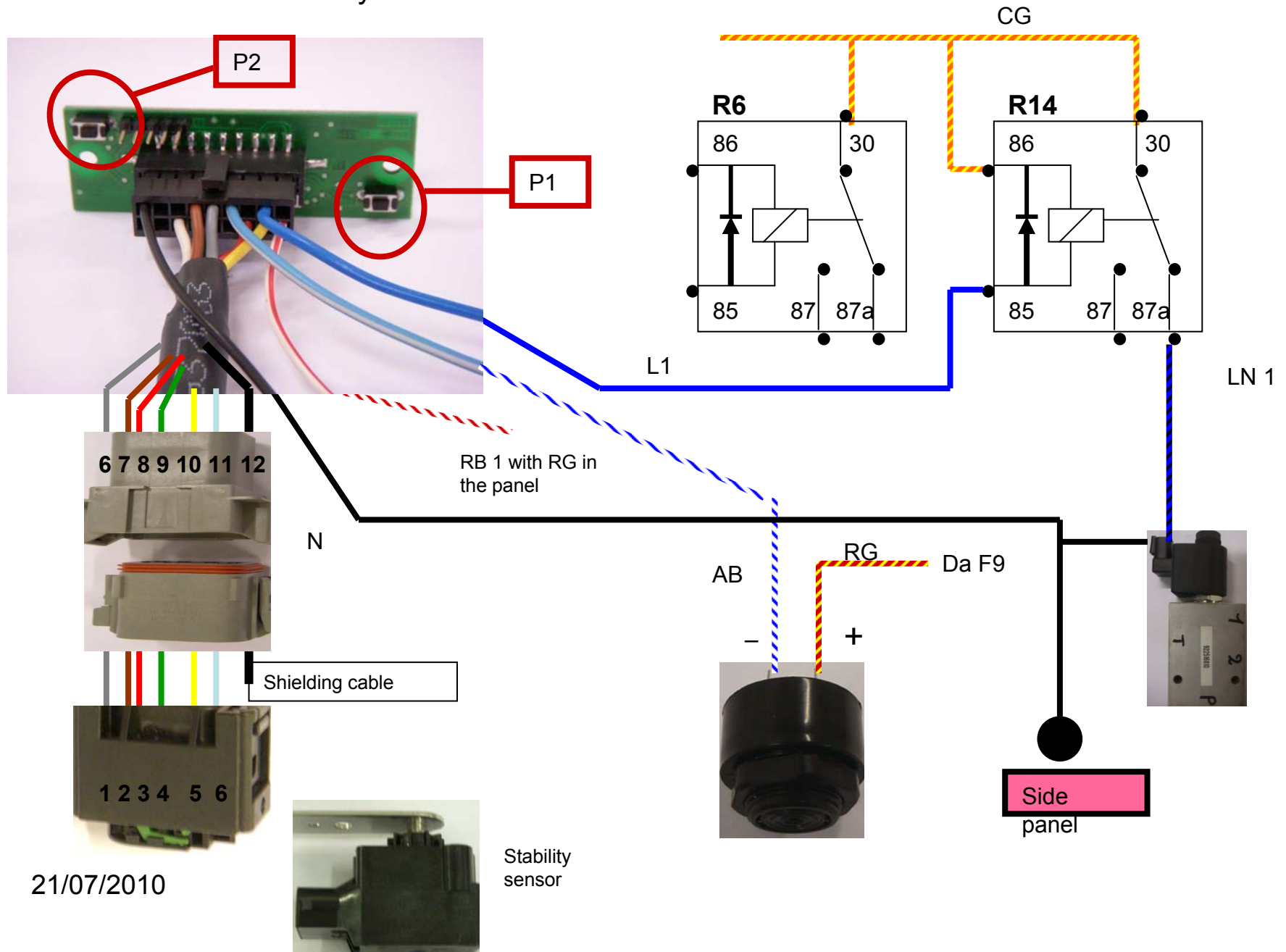


From page 13

Termoc. max temp water

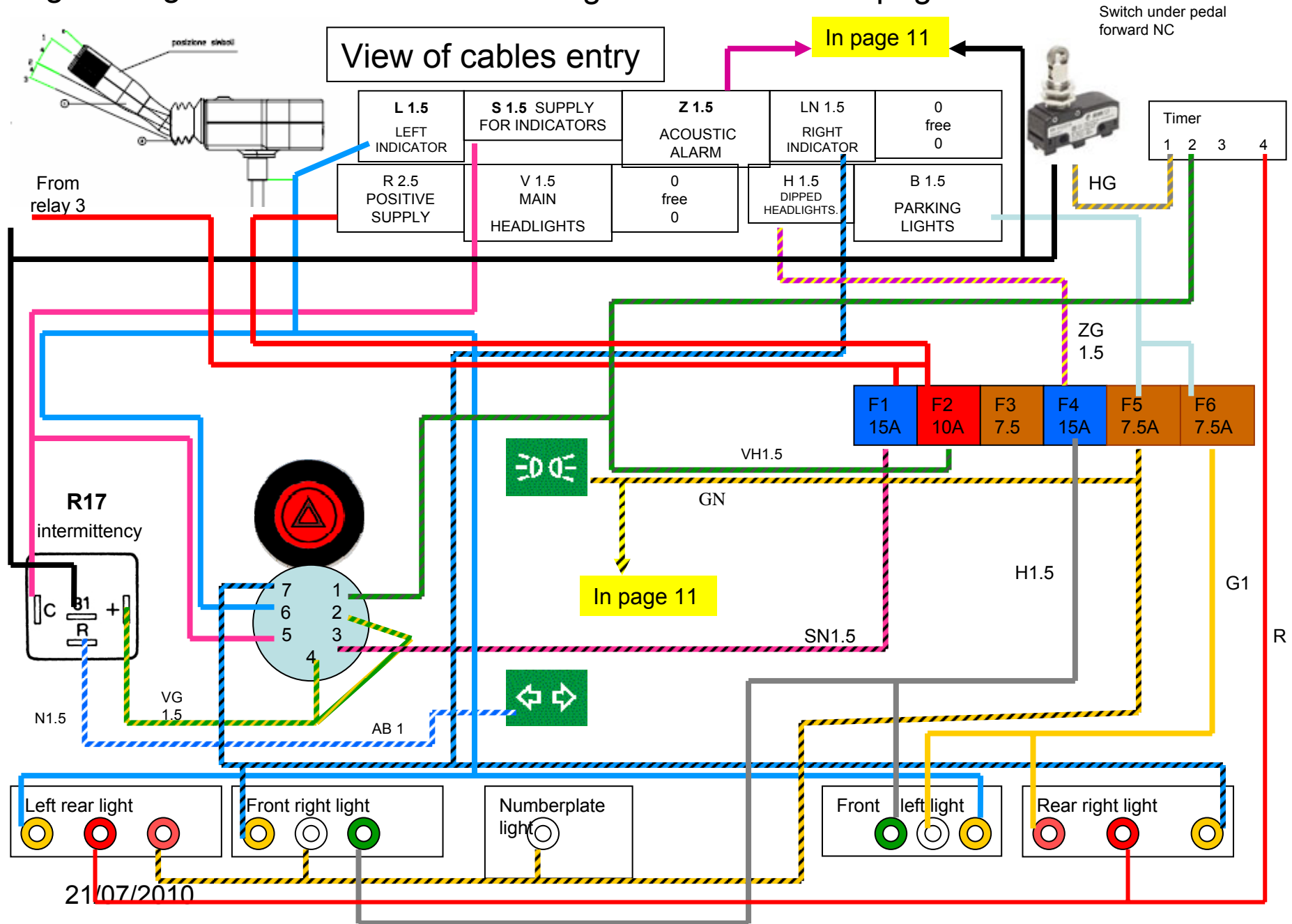
Intasamento filtro olio idraulico

Connection for stability sensor

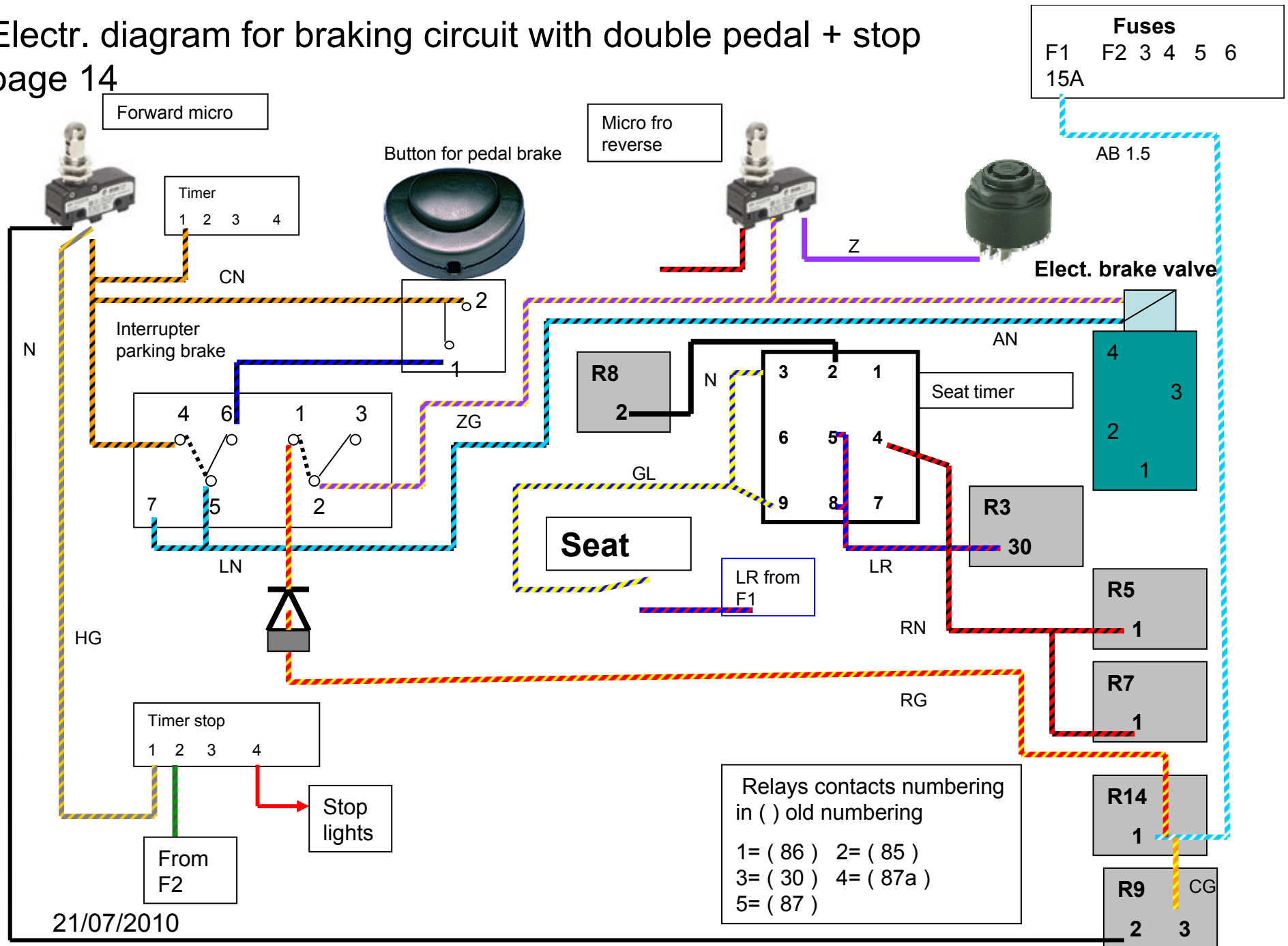


21/07/2010

Stability sensor



# Electr. diagram for braking circuit with double pedal + stop page 14



21/07/2010